

ARTICLE

DOI: 10.1038/s41467-018-03646-6

OPEN

Cross-ancestry genome-wide association analysis of corneal thickness strengthens link between complex and Mendelian eye diseases

Adriana I. Iglesias et al.[#] 

Central corneal thickness (CCT) is a highly heritable trait associated with complex eye diseases such as keratoconus and glaucoma. We perform a genome-wide association meta-analysis of CCT and identify 19 novel regions. In addition to adding support for known connective tissue-related pathways, pathway analyses uncover previously unreported gene sets. Remarkably, >20% of the CCT-loci are near or within Mendelian disorder genes. These included *FBN1*, *ADAMTS2* and *TGFB2* which associate with connective tissue disorders (Marfan, Ehlers-Danlos and Loeys-Dietz syndromes), and the *LUM-DCN-KERA* gene complex involved in myopia, corneal dystrophies and cornea plana. Using index CCT-increasing variants, we find a significant inverse correlation in effect sizes between CCT and keratoconus ($r = -0.62$, $P = 5.30 \times 10^{-5}$) but not between CCT and primary open-angle glaucoma ($r = -0.17$, $P = 0.2$). Our findings provide evidence for shared genetic influences between CCT and keratoconus, and implicate candidate genes acting in collagen and extracellular matrix regulation.

Correspondence and requests for materials should be addressed to S.M. (Email: Stuart.MacGregor@qimrberghofer.edu.au)
#A full list of authors appears at the end of the paper.

Central corneal thickness (CCT) is a highly heritable quantitative trait, with heritability estimates ranging between 0.68 and 0.95¹⁻⁴. The corneal stroma, which accounts for 90% of the corneal thickness in humans, is composed of uniformly arranged type I collagen fibrils that are critical to the optical properties of the cornea. Corneal thinning is a common feature of rare Mendelian connective tissue disorders, such as Ehlers-Danlos syndrome (EDS), Marfan syndrome and osteogenesis imperfecta (OI), and extreme thinning is a clinical characteristic of brittle cornea syndrome (previously classified as EDS type VIB based on non-ocular features shared with EDS)⁵⁻⁷. Thinner CCT is also observed in more common ocular disorders such as keratoconus⁸, and has been associated with development and progression of primary open-angle glaucoma (POAG)⁹⁻¹². Keratoconus is the leading cause of corneal transplants worldwide¹³ and its prevalence varies widely depending on the ethnicity, ranging from 0.02 in 100,000 to 229 in 100,000^{14,15}. POAG accounts for around 74% of all cases of glaucoma, which is the most common cause of irreversible blindness worldwide¹⁶.

Genetic variants that affect the functions of genes responsible for maintaining the structural integrity of cornea are strong candidates for involvement in corneal thickness-associated diseases. We previously reported that six CCT-associated single nucleotide polymorphisms (SNPs) were also associated with keratoconus (using $N = 874$ cases and 6085 controls), including two strong associations (mean odds ratio and lower 95% confidence interval estimates greater than 1.2), at the *FOXO1* and *FNDC3B* loci¹⁷. The latter was also shown to be associated with POAG (using $N = 2979$ cases and 7399 controls), although not in the direction that was expected (i.e., the CCT-decreasing allele was associated with decreased risk of POAG)¹⁷.

Over 26 loci have been associated with CCT to date, explaining around 8% of the CCT heritability¹⁷. Increased knowledge of the genetic basis of the variation in CCT in the general population promises to help in prioritising future research in corneal disease. To identify new CCT-associated loci, we performed a larger cross-ancestry genome-wide association study (GWAS) including over 25,000 individuals of European and Asian descent, with genotypes imputed to the 1000 genomes reference panel. Further, we assess the relevance of CCT influencing loci to the risk of

keratoconus and POAG using slightly larger (keratoconus) and substantially larger (POAG) ocular disease datasets than those previously described¹⁷.

Results

Meta-analysis of GWAS studies. The overall study design and main findings are depicted in Supplementary Fig. 1. In stage 1, we meta-analysed GWAS results from 14 studies comprising 17,803 individuals of European ancestry (see details in Supplementary Table 1). The inflation factor for European-specific meta-analysis was 1.075 (lambda scaled to $n = 1000$ is 1.004), which suggests the population stratification had a negligible effect on our meta-analysis. The European-specific meta-analysis identified 28 genome-wide significant CCT loci ($P < 5 \times 10^{-8}$) (Supplementary Table 2 and Supplementary Fig. 2a, b). Of these, seven were novel loci and map (as per closest gene) to *LTBP1*, *STAG1*, *ARL4C*, *NDUFAF6*, *ADAMTS8*, *DCN* and *POLR2A*. In stage 2, we examined the 28 lead SNPs from stage 1 in the Asian-specific meta-analysis ($n = 8107$) and found that 16, including the novel lead SNPs within or close to *ADAMTS8* and *DCN*, were significant after Bonferroni correction ($P \leq 1.79 \times 10^{-3}$, 0.05/28), further three other SNPs including the two novel close to *STAG1* and *NDUFAF6* were nominally significant ($P < 0.05$). The effect estimates of these 19 (16 + 3) loci were in the same direction and order of magnitude as in the European-specific meta-analysis (Tables 1 and 2 and Supplementary Table 2). Lead SNPs at four of the nine remaining loci, including at *LTBP1*, did not meet our filtering criteria in the Asian-specific meta-analysis (see Methods section). Lead SNPs at the remaining five loci showed the same direction but did not reach nominal significance, with SNPs at *ARL4C* and *POLR2A* displaying little effect in Asian populations. Meta-analysis of Asian-specific cohorts alone did not result in novel genome-wide significant findings (Supplementary Table 3 and Supplementary Fig. 3a, b). Because most loci had consistent effect directions in both European and Asian meta-analyses, we performed in stage 3 a cross-ancestry fixed-effect meta-analysis to detect additional loci associated with CCT ($N = 25,910$). This stage 3 meta-analysis identified 44 loci associated with CCT of which 19 were novel findings (Fig. 1 and Supplementary

Table 1 Results from cross-ancestry meta-analysis (chromosomes 1-7)

SNP	Chr:bp	Nearest gene	A1/A2	European-specific meta-analysis			Asian-specific meta-analysis			Cross-ancestry meta-analysis			
				A1F	β (SE)	P	A1F	β (SE)	P	A1F	β (SE)	P	N
rs96067	1:36571920	COL8A2	a/g	0.81	0.99 (0.48)	4.08E-02	0.56	3.94 (0.52)	3.48E-14	0.69	2.37 (0.35)	2.52E-11	25,910
rs4846476	1:218526228	TGFB2	c/g	0.23	-1.83 (0.46)	7.22E-05	0.31	-2.11 (0.56)	1.64E-04	0.26	-1.94 (0.35)	4.77E-08	23,830
rs115781177	2:33348494	LTBP1	a/g	0.93	-5.04 (0.89)	1.69E-08	NA	NA (NA)	NA	0.93	-5.04 (0.89)	1.69E-08	12,119
rs121908120	2:219755011	WNT10A	a/t	0.03	-11.48 (1.58)	5.02E-13	NA	NA (NA)	NA	0.03	-11.48 (1.58)	5.02E-13	12,119
rs4608502	2:228134155	COL4A3	t/c	0.35	-2.47 (0.39)	4.68E-10	0.36	-2.19 (0.54)	5.12E-05	0.35	-2.37 (0.32)	1.18E-13	25,910
3:136138073	3:136138073	STAG1	d/r	0.24	-2.64 (0.47)	2.49E-08	0.19	-2.80 (1.09)	1.05E-02	0.23	-2.67 (0.43)	8.66E-10	20,982
rs9822953	3:156472071	TIPARP ^a	t/c	0.67	2.69 (0.40)	2.57E-11	0.67	1.11 (0.61)	7.15E-02	0.67	2.22 (0.33)	5.13E-11	25,910
rs6445046	3:171933252	FNDC3B	t/g	0.78	3.73 (0.49)	7.22E-14	0.66	3.17 (0.57)	3.59E-08	0.73	3.49 (0.37)	1.98E-20	24,899
3:177306757	3:177306757	TBL1XR1 ^b	d/r	0.39	-2.40 (0.42)	1.43E-08	0.53	-1.84 (0.52)	4.35E-04	0.44	-2.18 (0.32)	3.54E-11	23,060
rs28789690	4:149077899	NR3C2	a/g	0.07	-3.02 (0.74)	4.93E-05	0.11	-3.49 (0.84)	3.59E-05	0.09	-3.22 (0.55)	7.60E-09	25,128
rs10471310	5:64548961	ADAMTS6	t/c	0.37	2.62 (0.39)	1.74E-11	0.39	1.87 (0.53)	4.36E-04	0.38	2.36 (0.31)	6.12E-14	25,910
rs249767	5:141918585	FGF1	t/c	0.78	2.01 (0.46)	1.56E-05	0.51	2.15 (0.54)	7.30E-05	0.67	2.07 (0.35)	4.60E-09	25,910
rs35028368	5:178671146	ADAMTS2	i/r	0.29	-2.34 (0.48)	1.25E-06	0.11	-2.59 (0.99)	8.80E-03	0.26	-2.39 (0.43)	3.69E-08	23,060
rs13191376	6:45522139	RUNX2	t/c	0.35	-2.07 (0.39)	1.78E-07	0.14	-1.99 (0.91)	2.94E-02	0.32	-2.06 (0.36)	1.55E-08	25,910
rs1412710	6:75837203	COL12A1	t/c	0.15	-2.56 (0.56)	5.26E-06	0.33	-1.93 (0.58)	9.19E-04	0.24	-2.26 (0.40)	2.42E-08	24,899
rs1931656	6:82610188	FAM46A	a/t	0.45	2.17 (0.39)	2.75E-08	0.47	2.96 (0.52)	2.13E-08	0.46	2.451 (0.31)	6.32E-15	24,899
6:16953553	6:16953553	THBS2	i/r	0.19	-2.98 (0.62)	1.76E-06	0.30	-2.22 (0.69)	1.41E-03	0.24	-2.64 (0.46)	1.27E-08	23,060
7:66262284	7:66262284	RABGF1 ^c	d/r	0.27	-3.32 (0.44)	1.25E-13	0.34	-2.73 (0.56)	1.03E-06	0.29	-3.09 (0.35)	9.62E-19	24,071
rs2106166	7:92668332	SAMD9	a/t	0.57	1.95 (0.40)	1.39E-06	0.38	1.48 (0.55)	7.99E-03	0.50	1.79 (0.32)	4.63E-08	24,899

Nearest gene (reference NCBI build37) is given as locus label, but this should not be interpreted as providing support that the nearest gene is the best candidate, a list including all the genes +/- 200 kb of the lead SNP is presented in Supplementary Table 12

New loci are in bold

SNP rsID, Chr:bp chromosome: base pair, A1 risk allele, A2 other allele, A1F frequency of allele A1, β effect size on CCT based on allele A1, SE standard error of the effect size, i insertion, d deletion, r reference, N number of individuals included in the meta-analysis per variant

^aThe lead SNP is located in a validated non-coding mRNA, LINC00886

^bThe lead SNP is located in a validated non-coding mRNA, LINC00578

^cIn Lu et al.¹⁷ this locus was reported as two loci (VKORC1L1 and C7orf42)

Table 2 Results from cross-ancestry meta-analysis (chromosomes 8–22)

SNP	Chr:bp	Nearest gene	A1/A2	European-specific meta-analysis			Asian-specific meta-analysis			Cross-ancestry meta-analysis			
				A1F	β (SE)	P	A1F	β (SE)	P	A1F	β (SE)	P	N
rs3808520	8:23164773	LOXL2	c/g	0.21	2.50 (0.48)	2.61E-07	0.10	2.02 (0.88)	2.28E-02	0.18	2.39 (0.42)	2.02E-08	24,899
rs10429294	8:95969322	NDUFAF6	t/c	0.50	2.36 (0.39)	2.21E-09	0.66	1.34 (0.55)	1.60E-02	0.56	2.02 (0.32)	3.48E-10	24,899
rs7026684	9:4215308	GLI53	a/g	0.36	-2.00 (0.39)	4.24E-07	0.39	-1.81 (0.55)	1.04E-03	0.37	-1.94 (0.32)	1.73E-09	25,910
rs66720556	9:13559717	MPDZ	a/t	0.18	-1.86 (0.51)	3.01E-04	0.25	-3.80 (0.59)	2.18E-10	0.21	-2.68 (0.39)	6.06E-12	24,071
rs10980623	9:113660537	LPAR1	a/g	0.79	-2.63 (0.46)	1.06E-08	0.79	-3.43 (0.63)	6.06E-08	0.79	-2.90 (0.37)	5.63E-15	25,910
rs3132303	9:137444298	COL5A1	c/g	0.26	5.23 (0.49)	6.11E-26	0.26	5.91 (0.71)	1.21E-16	0.26	5.45 (0.40)	8.35E-41	24,899
rs7040970	9:139859013	LCN12	t/c	0.49	3.35 (0.41)	3.54E-16	0.72	1.80 (0.63)	4.31E-03	0.56	2.89 (0.34)	4.75E-17	24,899
rs35809595	10:63831928	ARID5B	a/g	0.40	-2.29 (0.39)	8.97E-09	0.36	-2.66 (0.53)	6.56E-07	0.39	-2.43 (0.32)	3.40E-14	24,899
rs2419835	10:115296564	HABP2	t/c	0.86	2.21 (0.54)	4.70E-05	0.45	2.33 (0.52)	9.01E-06	0.65	2.27 (0.37)	1.74E-09	25,910
rs4938174	11:110913240	ARHGAP20-C11orf53	a/g	0.30	1.82 (0.41)	9.97E-06	0.15	3.74 (0.75)	6.14E-07	0.26	2.26 (0.36)	3.59E-10	25,910
rs56009602	11:130289612	ADAMTS8	t/c	0.05	6.86 (0.92)	1.30E-13	0.10	7.24 (0.93)	1.25E-14	0.08	7.05 (0.66)	1.16E-26	25,910
rs7308752	12:91527181	DCN	a/g	0.91	3.87 (0.67)	1.07E-08	0.73	2.28 (0.68)	7.91E-04	0.82	3.08 (0.48)	1.34E-10	25,302
rs11553764	12:104415244	GLT8D2	t/c	0.17	3.19 (0.53)	2.77E-09	0.20	4.14 (0.67)	8.62E-10	0.18	3.55 (0.42)	2.47E-17	24,899
rs10161679	13:23243645	FGF9-SGCC ^a	a/g	0.71	-2.40 (0.45)	1.41E-07	0.72	-1.99 (0.64)	2.16E-03	0.71	-2.26 (0.37)	1.28E-09	24,899
rs134112152	13:41112152	FOXO1	i/r	0.10	-5.44 (0.66)	2.15E-16	0.03	-2.52 (1.81)	1.64E-01	0.10	-5.10 (0.62)	2.54E-16	24,071
rs56223983	14:81814754	STON2	t/g	0.30	2.01 (0.42)	1.83E-06	0.30	1.99 (0.58)	5.94E-04	0.30	2.00 (0.34)	4.14E-09	25,910
rs785422	15:30173885	TJPI	t/c	0.11	-4.01 (0.63)	2.65E-10	0.08	-3.50 (1.26)	5.75E-03	0.10	-3.91 (0.56)	5.72E-12	21,810
rs8030753	15:48801935	FBN1	t/c	0.13	2.02 (0.55)	2.75E-04	0.27	2.51 (0.59)	2.29E-05	0.20	2.25 (0.40)	2.87E-08	25,910
rs12912010	15:67467143	SMA3	t/g	0.22	2.76 (0.47)	6.40E-09	0.36	2.21 (0.53)	3.92E-05	0.28	2.52 (0.35)	1.50E-12	24,899
rs4843040	15:85838636	AKAP13 ^b	t/c	0.24	-2.92 (0.44)	3.62E-11	0.47	-2.35 (0.52)	6.68E-06	0.33	-2.68 (0.33)	1.68E-15	25,910
rs930847	15:101558562	LRRK1	t/g	0.77	-3.57 (0.45)	3.19E-15	0.73	-3.79 (0.61)	7.82E-10	0.76	-3.64 (0.36)	1.63E-23	25,910
rs35193497	16:88324821	ZNF469	t/g	0.36	-6.23 (0.43)	8.64E-47	0.29	-4.92 (0.62)	2.34E-15	0.34	-5.80 (0.35)	8.08E-60	24,899
rs4792535	17:14565130	HS3ST3B1	t/c	0.29	-2.43 (0.41)	3.61E-09	0.47	-2.04 (0.54)	1.72E-04	0.36	-2.29 (0.32)	3.13E-12	25,302
rs8133436	21:47519535	COL6A2	t/c	0.05	3.90 (1.07)	2.84E-04	0.25	3.47 (0.72)	1.85E-06	0.18	3.61 (0.60)	2.17E-09	24,899
rs71313931	22:19960184	ARVCF	c/g	0.71	-2.23 (0.44)	5.49E-07	0.78	-2.22 (0.70)	1.59E-03	0.73	-2.23 (0.37)	3.21E-09	24,899

Nearest gene (reference NCBI build37) is given as locus label, but this should not be interpreted as providing support that the nearest gene is the best candidate, a list including all the genes +/- 200 kb of the lead SNP is presented in Supplementary Table 12

New loci are in bold

SNP rsID, Chr:bp chromosome: base pair, A1 risk allele, A2 other allele, A1F frequency of allele A1, β effect size on CCT based on allele A1, SE standard error of the effect size, i insertion, d deletion, r reference, N number of individuals included in the meta-analysis per variant

^aThe lead SNP is located 228KB 3' of the pseudogene *BASPI1*

^bThe lead SNP is located in pseudogene *ADAMTS7P4*

Figs. 4, 5). These 19 loci included five of the seven loci found in stage 1 (European-meta-analysis) and 14 novel ones with similar effect size and direction across-ancestries, see Tables 1 and 2. Two of the 44 loci are driven by low-frequency variants (i.e., 0.01 < minor allele frequency [MAF] < 0.05) identified in the European-specific meta-analysis (both are monomorphic in Asians), one novel in *LTBP1* and one known in *WNT10A*¹⁸. The remaining 42 loci were all consistent across ancestries.

Independent signals. In our previous CCT GWAS we identified loci harbouring multiple independent variants¹⁷. To identify additional independently associated variants in European population, we performed conditional and joint multiple-SNP (CoJo) analysis implemented in the program GCTA. We used genotype data of 2582 unrelated Australians from the BMES cohort¹⁹. The CoJo analysis resulted in 16 independent SNPs, of which seven have not been previously associated with CCT (Table 3). Thus, in total, we identified 44 loci associated with CCT, harbouring 54 independent association signals (i.e., 28 previously published + 19 from the cross-ancestry meta-analysis + 7 from CoJo analyses).

Gene-based association analysis. To further identify loci not implicated in the single marker association tests, we performed gene-based tests using the software VEGAS2²⁰ using a '–10 kb' window (see Methods section). We performed separate analyses for European-specific and Asian-specific meta-analyses results. In total 24,769 autosomal genes were analysed. Hence, we set our Bonferroni-corrected gene-based significant threshold as $P_{\text{gene-based}} < 2.02 \times 10^{-6}$ (0.05/24,769). In addition to genes implicated through the single marker association tests, we found significant association of the *CDO1* gene with CCT ($P_{\text{gene-based}} = 3.74 \times 10^{-7}$, Supplementary Data 1). This gene showed strong association in the European gene-based study ($P_{\text{gene-based}} = 2.00 \times 10^{-7}$), with a top variant rs34869 ($P = 7.88 \times 10^{-8}$) driving the association.

Clinical relevance of CCT-associated loci. We first investigated whether the CCT-associated variants influence susceptibility to keratoconus and to POAG. Since keratoconus is characterized by progressive thinning of the cornea and reduced CCT is associated with POAG, we expected—if the underlying mechanisms are shared—that the CCT-reducing alleles would also increase the risks of keratoconus and of POAG. We aimed to test the association of all 54 independent CCT SNPs (or their proxies, $r^2 > 0.8$) in the case-control studies. However, after quality control, only 36 SNPs were available in the keratoconus studies; all 54 SNPs were available in the POAG studies. We used a P -value of 5.56×10^{-4} (0.05/90) as Bonferroni-corrected significance threshold.

The keratoconus cohorts comprised 933 cases and 5946 controls of European ancestry. Overall, we found a significant negative correlation of effect sizes across CCT and keratoconus ($r = -0.62$, $P = 5.30 \times 10^{-5}$) (Fig. 2a, Supplementary Table 4), this correlation was largely unchanged if the known SNPs in *ZNF469*, *FOXO1*, *COL5A1* and *MPDZ/NFIB* were removed from the analysis ($r = -0.61$, $P = 2.04 \times 10^{-4}$). Of the 36 CCT SNPs tested for association with disease risk in the keratoconus studies, three were significant and with the expected direction of effect (rs66720556 between *MPDZ-NFIB*, rs3132303 between *RXRA-COL5A1*, and rs2755238 close to *FOXO1*). Another 14 independent SNPs were associated at a nominal level of significance ($P < 0.05$). Of these, 12 showed the expected risk effect direction, including three tagging known CCT loci that had not reached nominal significance in our previous study (using a different proxy SNP), and four tagging novel CCT loci (*DCN*, *LTBP1*, *STAG1*, and *THBS2*). Of those, rs7308752 in *DCN* displayed the smallest P -value ($P = 6.33 \times 10^{-3}$, Supplementary Table 4).

Analyses in POAG cohorts included 5008 cases and 35,472 controls of European ancestry. None of the 54 available CCT-SNPs were significantly associated with POAG after correcting for multiple testing (Supplementary Table 5). Further, no correlation in effect sizes between CCT and POAG was found ($r = -0.17$, $P = 0.2$, Fig. 2b). Five variants were nominally associated (rs6445046 in *FNDC3B*, rs66720556 between *MPDZ* and *NFIB*,

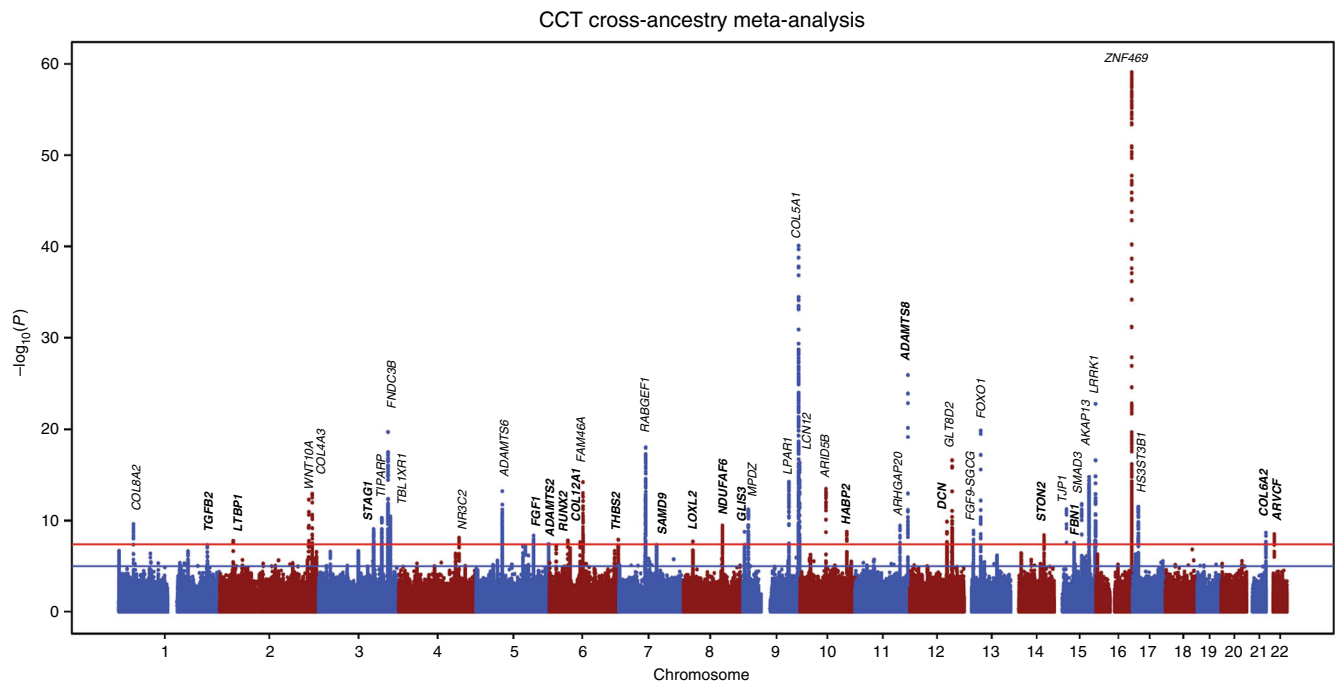


Fig. 1 Manhattan plot of CCT in the cross-ancestry meta-analysis. Manhattan plot of the GWAS meta-analysis for CCT in the cross-ancestry analysis ($n = 25,910$). The plot shows $-\log_{10}$ -transformed P -values for all SNPs. The red horizontal line represents the genome-wide significance threshold of $P < 5.0 \times 10^{-8}$; the blue horizontal line indicates a P -value of 1×10^{-5} . Loci are annotated to the nearest gene as in Tables 1 and 2. New loci are in bold

rs56009602 in *ADAMTS8*, rs10161679 between *SNORD36* and *BASP1P1*, and rs2755238 close to *FOXO1*). Of these, association between rs6445046 in *FNDC3B* and POAG was the strongest ($P = 3.18 \times 10^{-3}$). However, as in our previous study¹⁷, the CCT-decreasing allele tagging *FNDC3B* was associated with a decreased risk of glaucoma rather than the expected increased risk. The next strongest association was for rs2755237 close to *FOXO1* ($P = 3.70 \times 10^{-3}$); in this instance with the CCT-decreasing allele C being associated with an increased risk of glaucoma (rs2755237-C allele glaucoma OR = 1.15).

We then investigated whether CCT-associated loci are located in the vicinity (less than 1 Mb away) of rare Mendelian disorder genes (Supplementary Data 2). We identified that 20.5% (9/44) of the CCT loci are within 1 Mb of a Mendelian gene implicated in rare corneal or connective tissue diseases. In addition to the more immediate connections previously recognised (*COL5A1*—classical EDS, *ZNF469*—brittle cornea syndrome, *COL8A2*—Fuchs endothelial dystrophy), *AGBL1*—a Fuchs endothelial dystrophy gene²¹—is 784 kb away from rs4843040 on chr15q25.3, and *SMAD3* is a Loey-Dietz connective tissue syndrome gene. For the CCT loci identified here, *DCN* (12 kb from rs7308752) and *KERA* in the same locus (75 kb from rs7308752), are involved in congenital stromal corneal dystrophy (OMIM: 610048) and Cornea plana 2 (OMIM:217300), respectively. Finally, three connective tissue disease genes harboured lead SNPs for new CCT loci, *ADAMTS2* (intronic lead SNP rs35028368) involved in EDS, type VIIC (OMIM: 225410), *FBN1* (intronic lead SNP rs8030753) the Marfan syndrome major gene (OMIM: 154700), and *TGF2* (intronic lead SNP rs4846476) a Loey-Dietz syndrome gene.

Regulatory potential of CCT-associated variants. We explored regulatory annotations within the 54 independent CCT lead SNPs and their proxies ($r^2 > 0.8$) using different tools (see Methods section). In total, 974 variants (i.e., 54 lead SNPs + 920 SNPs in LD) were examined. Of these, 118 were prioritized including the

54 lead SNPs and another 64 SNPs which were selected based on their RegulomeDB score²² (i.e., 1a–1f, 2a–2c or 3a). SNPs with a score from 1a–1f to 2a–2c were classified as showing maximum evidence for being located in regulatory regions, while SNPs with a score of 3a were classified as showing medium evidence (Supplementary Data 3). In total, 63% (75/118) of the prioritized SNPs overlap with at least two regulatory elements of the ENCODE data (i.e., promoter or enhancer histone marks, DNase I hypersensitive sites, transcription factor or other protein-binding sites and eQTLs). Strong enrichment for histone modifications, particularly, H4K20me1 (which indicates transcriptional activation), was also found when results from the European-specific meta-analysis were assessed using GARFIELD (<http://www.ebi.ac.uk/birney-srv/GARFIELD>) (Supplementary Fig. 6). Additionally, we found 26 SNPs in eight loci showing a cis-eQTL effect in skin, which share the same embryonic origin as the cornea (Supplementary Data 3). Further, we tested if genes in associated CCT loci were highly expressed in any of the 209 Medical Subject Heading (MeSH) annotations used in DEPICT²³. Tissue-enrichment analyses showed 33 FDR-associated (< 0.05) tissues or cell type annotations. Of these, one annotation included the musculoskeletal system, five included tissues such as the muscle and connective tissue, and nine included cell types such as myocytes, osteoblast, chondrocytes, mesenchymal stem cells, stromal cells and fibroblasts (Supplementary Table 6). DEPICT prioritized 54 genes, of which 85% (46/54) are expressed in the human cornea. High expression levels (> 200 PLIER) were observed for *SMAD3*, *COL12A1* and *DCN*, *LUM*, *KERA* (Supplementary Table 7), the latter three being at the same “*DCN*” locus.

Pathway analysis. We tested enrichment of the genes defined by VEGAS2 in 9981 pathways or gene-sets derived from the Biosystem’s database. Using a 10 kb window in the VEGAS2 computation, we identified 23 pathways that were significantly enriched after correcting for multiple testing ($P_{\text{gene-set}} < 5.01 \times 10^{-6}$),

Table 3 CCT-associated variants from the conditional and joint analysis of the meta-analysis of European studies and replication in Asians

SNP	Chr:bp	Nearest gene	Annotation	Previously reported SNP (ref) ^a	A1/A2	Meta-analysis in Europeans			CoJo analysis in Europeans			Meta-analysis in Asians			
						A1F	β (SE)	P	A1F	β (SE)	P_{CoJo}	LD_r	A1F	β (SE)	P
rs1309531	5:64306311	CWC27	Intronic		a/t	0.55	-2.4 (0.379)	2.439E-10	0.56	-2.096 (0.383)	4.28E-08	0.130	0.63	-1.184 (0.547)	3.03E-02
rs10064391	5:64686659	ADAMTS6	Intronic	rs2307121 ¹⁷	a/g	0.63	-2.765 (0.397)	3.182E-12	0.62	-2.484 (0.4)	5.53E-10	0.000	0.70	-0.889 (0.601)	1.39E-01
rs1931656	6:82610188	148 kb 5' of FAM46A	Intronic		a/t	0.45	2.172 (0.391)	2.749E-08	0.45	2.383 (0.393)	1.31E-09	-0.104	0.47	2.965 (0.529)	2.13E-08
rs9361886	6:82778502	101 kb 3' of IBTK	Intergenic	rs1538138 ¹⁷	t/c	0.54	2.391 (0.445)	7.665E-08	0.56	2.637 (0.447)	3.66E-09	0.000	0.57	2.35 (0.66)	3.67E-04
rs3094339	9:136884738	VAV2-BRD3	Intergenic		a/g	0.71	-2.804 (0.426)	4.682E-11	0.72	-3.042 (0.427)	1.01E-12	-0.008	0.53	0.671 (0.559)	2.30E-01
rs4841899	9:137424412	92 kb 3' of RXRA	Intergenic	rs4842044, rs1536478 ^{66,67}	t/c	0.67	-2.993 (0.405)	1.413E-13	0.67	-2.289 (0.416)	3.60E-08	-0.037	0.63	-2.383 (0.596)	6.32E-05
rs1536482	9:137440528	93 kb 5' of COL5A1	Intergenic	rs3132306, rs3118516, rs3118520 ^{17,68}	g/a	0.66	4.569 (0.399)	1.95E-30	0.66	3.455 (0.425)	4.60E-16	0.388	0.68	2.864 (0.601)	1.85E-06
rs3132303	9:137444298	89 kb 5' of COL5A1	Intergenic		c/g	0.26	5.236 (0.497)	6.11E-26	0.26	3.55 (0.544)	6.86E-11	-0.039	0.26	5.912 (0.714)	1.21E-16
rs7032489	9:137559775	COL5A1	Intronic	rs7044529 ¹⁷	c/g	0.86	4.033 (0.547)	1.637E-13	0.86	4.296 (0.548)	4.64E-15	-0.008	0.81	1.845 (0.685)	7.08E-03
rs116878472	12:104210992	NTSDC3	Intronic		t/c	0.97	-8.392 (1.506)	2.523E-08	0.97	-8.829 (1.509)	4.95E-09	-0.058	NA	NA	NA
rs1111869	12:104402485	GLT8D2	Intronic	rs1564892 ¹⁷	g/a	0.83	-3.174 (0.51)	4.77E-10	0.83	-3.308 (0.511)	9.40E-11	0.000	0.78	-3.479 (0.636)	4.38E-08
rs2034809	15:101555399	LRRK1	Intronic	rs4965359	g/a	0.51	1.844 (0.4)	4.047E-06	0.51	2.545 (0.407)	3.82E-10	-0.177	0.34	2.161 (0.579)	1.88E-04
rs930847	15:101558562	LRRK1	Intronic	rs930847 ¹⁷	g/t	0.23	3.573 (0.453)	3.194E-15	0.22	3.955 (0.461)	9.17E-18	-0.042	0.27	3.793 (0.617)	7.82E-10
rs752092	15:101781934	CHSY1	Intronic		a/g	0.66	-2.205 (0.396)	2.584E-08	0.67	-2.19 (0.397)	3.46E-08	0.000	0.79	-1.745 (0.652)	7.40E-03
rs35193497	16:88324821	169 kb 5' of ZNF469	Intergenic	rs6540223 ¹⁷	t/g	0.36	-6.238 (0.434)	8.637E-47	0.34	-4.654 (0.495)	4.90E-21	0.653	0.29	-4.928 (0.622)	2.34E-15
rs28687756	16:88328928	165 kb 5' of ZNF469	Intergenic		t/g	0.57	-7.507 (0.584)	8.418E-38	0.53	-4.566 (0.667)	7.84E-12	0.000	NA	NA	NA

Results from the conditional and joint analysis, genotype data from BMES cohort was used ($N = 2582$)

Nearest gene, (reference NCBI build37) is given as locus label, but this should not be interpreted as providing support that the nearest gene is the best candidate, a list including all the genes +/- 200 kb of the lead SNP is presented in Supplementary Table 12

SNP rsID, Chr:bp chromosome: base pair, A1 risk allele, A2 other allele, A1F frequency of allele A1, β effect size on CCT based on allele A1, SE standard error of the effect size, i insertion, d deletion, r reference, $P_{\text{CoJo}} = P$ -value after CoJo analyses

^aSNPs in LD ($r^2 > 0.5$) with SNP from CoJo analyses. In bold novel independent CCT-associated SNPs

Supplementary Data 4. The majority of these gene-sets are involved in the metabolic activities associated with collagen and extracellular matrix (ECM). We confirmed the previously identified significant association of the collagen trimer pathway (GO:0005581) with CCT¹⁷. Additional pathways involved in basement membrane (GO:0005604), TGF- β regulation (GO:0071636) and skeletal system development (GO:0001501), were also identified as associated with CCT. Similar pathways were observed using single variants with sub-threshold association P -values $< 1 \times 10^{-4}$ as input for the interval enrichment analysis (INRICH) method, Supplementary Table 8. Pathway analysis using a 200 kb window in VEGAS2, showed comparable pathways and additionally revealed the endoplasmic-reticulum-associated protein degradation (ERAD) pathway (GO:0036503) (Supplementary Data 5). The ERAD pathway also emerged as an overrepresented canonical pathway in the Ingenuity Pathway Analysis (IPA) (Supplementary Fig. 7), along with pathways related to connective tissue disorders and metabolism (Supplementary Tables 9, 10).

The FUMA platform (https://ctg.cncr.nl/software/fuma_gwas) highlighted that eight of the closest genes to the 44 CCT cross ethnic meta-analysis lead variants are amongst the 64 fibroblastic signature genes overexpressed in cancer cells that have undergone epithelial to mesenchymal transition²⁴: THBS2, COL5A1, FBN1, LOXL2, DCN, LUM, COL6A2 and GLT8D2.

Discussion

In this study, we identified 44 loci associated with CCT (42 across ancestry and two European specific—*LTBP1* and *WNT10A*), 19 of which are novel findings. We also found that six of the 44 loci harbour multiple independent signals associated with CCT. Furthermore, we explored the relevance of CCT to complex eye diseases (i.e., keratoconus and POAG) and to Mendelian disorders. We found evidence of a strong inverse correlation in effect sizes between CCT and keratoconus, but not between CCT and POAG. Interestingly, 20.5% (9/44) of the CCT-associated loci are located close or within genes implicated in rare corneal or connective tissue disorders.

We confirmed all loci, except one (rs3749260 in *GPR15*), reported in our previous study by Lu et al.¹⁷ The variant in

GPR15 found by Lu et al.¹⁷ in the European-specific analysis did not reach genome-wide significance in either our European-specific ($P = 2.15 \times 10^{-6}$) or cross-ancestry meta-analysis ($P = 6.93 \times 10^{-5}$); this could be due to the additional samples analysed or/and different quality of imputation. Additionally, in our study, we identified only one signal in the chr7q11.21 region, which in Lu et al.¹⁷ was reported as two independent loci, *TMEM248* (also called as *C7orf42*) and *VKORC1L1*. Interestingly, the variant found in our study (rs34557764) lies in *RABGEF1* with established eQTL effect in 90 tissues, influencing the expression of various genes including *TMEM248* in testis, and *VKORC1L1* in skin, blood and esophagus muscularis^{25,26}, and further studies will be needed to ascertain the associated target gene(s). Overall, we report 44 loci harbouring 54 independent CCT-associated SNPs. These associations explain 8.5% and 7.2% of narrow sense CCT heritability in the European and Asian populations, respectively. Despite the small increase in the variance explained in the present study (~0.2%), the new loci greatly improved our understanding of potential underlying mechanisms.

At the newly identified CCT loci, if we select the nearest gene to the top SNP, we can putatively identify genes related to collagen and ECM (*ADAMTS2*, *ADAMTS8*, *COL6A2*, *COL12A1*, *FBN1*, *LOXL2*, *LUM/DCN/KERA*, *THBS2*), skeletal morphogenesis (*RUNX2*), embryonic development and cell growth (*FGF1*), TGF- β signalling (*TGFB2*, *LTBP1*), binding processes (*ARVCF*, *STAG*), coagulation and fibrinolysis systems (*HABP2*), endocytic machinery (*STON2*) and mitochondrial processes (*NDUFAF6*). It is important to stress that for several of these genes, the nearest gene may not be the relevant gene because the associated SNPs can have their primary effect on a more distant gene or genes. However, for a subset of the above nearest genes, additional information is available to support the noted gene. For example, knockout mouse models available for these genes have shown a variety of cornea-related phenotypes, including thin corneal stroma (*FBN1*, *KERA*, *LUM*, *TGFB2*)^{27–32}, corneal opacity (*LUM*)^{30–32}, absence of corneal endothelium (*TGFB2*)²⁷, delayed corneal endothelium maturation and increased thickness (*COL12A1*)³³. While in other mouse models, observed phenotypes included fragile skin (*ADAMTS2*, *DCN*, *LUM*)^{30,31,34,35} or bone abnormalities (*RUNX2*, *COL12A1*)^{33,36}. Moreover,

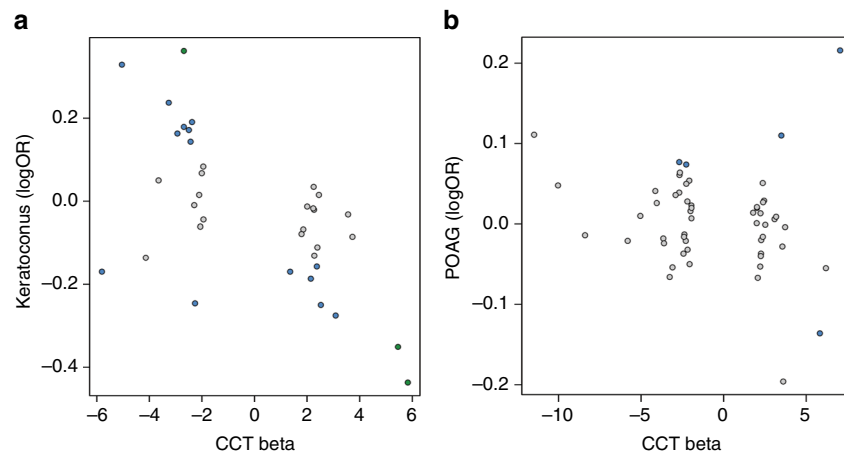


Fig. 2 Correlation of effect sizes between CCT and keratoconus and CCT and primary-open angle glaucoma. Each dot represents a CCT-associated variant. In green, variants that surpassed the Bonferroni-corrected significance threshold ($P < 5.56 \times 10^{-4}$) in the keratoconus analysis (**a**). In blue, variants that were associated with a nominal level of significance ($P < 0.05$) in the keratoconus or primary-open angle glaucoma analysis. In gray, variants that did not show association with keratoconus or primary-open angle glaucoma ($P > 0.05$). **a** shows correlation of effect sizes between CCT and keratoconus, **b** shows correlation of effect sizes between CCT and primary-open angle glaucoma

connections between ECM, skeletal and TGF- β signalling pathways give support for the implicated genes to influence CCT. For instance, it has been reported that fibrillin (encoded by *FBN1*) plays an important role in the ECM by controlling TGF- β signalling³⁷. In addition, the latent transforming growth factor β -binding protein 1 (encoded by *LTBP1*) is an ECM protein thought to mediate the binding between fibrillins and TGF- β , influencing the growth factors availability in bone and connective tissues.

Another locus of interest harbouring genes related to ECM and collagen is the “DCN” locus (top SNP rs7308752) in which *DCN*, *KERA* and *LUM* genes are located. Decorin (encoded by *DCN*, the closest gene to rs7308752) is a leucine-rich proteoglycan that promotes the formation of collagen fibers but also binds to the various isoforms of TGF- β and fibronectins³⁸. Mutations in *DCN* have been identified in congenital stromal corneal dystrophy^{35,39}; which produces characteristic corneal opacity and increased corneal thickness³⁵, making it an excellent candidate CCT gene. However, rs7308752 also shows a significant cis-eQTL effect ($P = 3.1 \times 10^{-6}$, in adipose tissue), modifying the expression of *KERA*, a keratan sulfate proteoglycan vital for maintaining corneal transparency. Mutations in *KERA* cause cornea plana-2 (OMIM:217300)^{40,41}, a recessive corneal disorder characterised by flattening of the normally convex corneal surface. Additionally, *LUM*, another gene in the region (30 kb apart from rs7308752), is a member of the small interstitial proteoglycan gene family and has been implicated in high myopia^{32,42}. In the ocular tissue database⁴³, all three genes showed high expression levels in the cornea, with *KERA* showing the highest expression.

Our gene-based analysis identified association of the *CDO1* gene with CCT. The *CDO1* protein, is a cysteine dioxygenase type 1, involved in various metabolic pathways. Expression studies in mouse found that *CDO1* is overexpressed in cornea compared with the lens; and based on its function, may play a role in protection against oxidative stress⁴⁴. The top variant, rs34869, leading association of *CDO1*, is an established eQTL in transformed fibroblasts²⁶, modifying the expression levels of *CDO1* and it is encompassed within promoter histone marks and DNase I hypersensitive sites in at least 20 tissues.

Corneal thinning is one of the clinical features of keratoconus. We found in the keratoconus analysis a consistent direction of effect in 77% (28/36) of the CCT-associated SNPs (Fig. 2a). This finding suggests that the effect of variants on keratoconus is mediated

through their effect on CCT. We did not observe the same trend in the POAG analyses (Fig. 2b), with our data providing no support for a role for CCT SNPs in determining POAG risk.

Interestingly, besides the “DCN” locus, three other loci harbour genes implicated in Mendelian diseases including rare connective tissue, inflammatory and eye disorders with corneal thinning as one of their clinical features, giving weight for them to be prioritized in follow-up studies. The cross-ancestry GWAS revealed an intronic variant (rs8030753) in the *FBN1* gene. Mutations in *FBN1* are the major cause of Marfan syndrome, an autosomal dominant disorder characterized by multiple manifestations in the ocular, skeletal, and cardiovascular systems. Patients with Marfan syndrome have flattened corneas with reduced stromal thickness⁴⁵. Common genetic variants in *FBN1* have also been associated with ocular refraction⁴⁶. The rs8030753 shows a significant cis-eQTL effect modifying the expression of *FBN1* in whole blood ($P = 4.1 \times 10^{-10}$)²⁶. Furthermore, we identified an intronic variant in *ADAMTS2*, which encodes a metalloproteinase involved in collagen metabolism⁴⁷; Mutations in *ADAMTS2* have been found in patients with EDS, type VIIC⁴⁸, a recessive inherited connective-tissue disorder. We also identified a common CCT variant (rs4846476) in *TGFB2*. It has been shown that *TGFB2* is down-regulated in skin fibroblasts of brittle cornea syndrome patients carrying *PRDM5* mutations⁴⁹. Our analysis brings the number of CCT-associated loci implicated in Mendelian diseases to nine, representing 20.5% (9/44) of the CCT loci. Most of the Mendelian disorders genes (8/9) are located within a 200 kb window from the lead SNP (Supplementary Table 12) with the exception of *AGBL*, located -784 kb away from rs4843040 in the 15q25.3 CCT-locus. Studies correlating gene variation to gene expression have found that most of the enhancers are located within a 200 kb window^{50,51}, supporting the hypothesis that lead CCT-associated SNPs might have an impact on the expression of genes that cause rare eye and connective tissue disorders. Our study reveals a considerable proportion of Mendelian genes as candidate genes involved in a quantitative trait.

Although findings of pathway analyses remain speculative, our exhaustive analyses suggest that the leading pathways implicated in CCT are related to the function and metabolism of connective tissue (e.g., collagen, ECM and basement membrane), as well as the regulation of TGF- β signalling, the development of skeletal system, and the ERAD pathway.

In conclusion, we have identified 19 novel loci associated with CCT and novel independent signals in six known loci. Together, CCT loci clearly point to genes implicated in collagen related pathways and ECM metabolism. The enrichment analyses highlighted gene-sets involved in collagen fibrils, ECM organisation, TGF- β signalling and fibroblastic determination, all fitting with a largely stromal contribution to CCT. Functional studies need to be performed to confirm which gene or genes are relevant at each locus and to assess the underlying mechanisms by which genetic variation influences CCT some of which promise to inform on the risk of complex diseases such as keratoconus.

Methods

Study design and sample description. We performed meta-analyses of 1000 genomes phase 1 (integrated variant set- March 2012 release) imputed GWASs on CCT and tested significance of associations in keratoconus and POAG cohorts for lead CCT SNPs. The overall study design and main findings are depicted in Supplementary Fig. 1. In total, 19 CCT cohorts ($N = 25,910$) from the International Glaucoma Genetics consortium (IGGC) participated in this study. In stage 1, we performed a meta-analysis of cohorts of European ancestry (14 cohorts, $N = 17,803$). In stage 2, genome-wide significant variants ($P < 5 \times 10^{-8}$) from stage 1 were tested in a meta-analysis of cohorts of Asian ancestry (5 cohorts, $N = 8107$). We then performed in stage 3, a joint meta-analysis of European-specific and Asian-specific results. The individual cohorts are as described in detail in previous publications^{18,52}, with summary statistics and imputation details in Supplementary Table 1. To investigate the role of the identified CCT loci in keratoconus and POAG, we then tested the implicated CCT loci in disease case-control sets. The keratoconus datasets comprised cases and controls from Australia (711 keratoconus cases and 2622 controls from the Blue Mountains Eye Study) and the United States (222 keratoconus cases and 3324 controls). The POAG cases and controls were drawn from studies in Australia (1155 cases and 1992 controls) and the United States (3853 cases and 33480 controls). Detailed information of the keratoconus and POAG cohorts can be found in the Supplementary Note 1. The local research and medical ethics committees approved the individual studies. Written informed consent was obtained from all participants (or parents in case of minors) in accordance with the Declaration of Helsinki.

Ancestry-specific and cross-ancestry GWAS meta-analyses. All participating studies performed association testing under an additive model for the effect of the risk allele while adjusting for age, sex and at least the first five principle components for the population-based studies. In samples with related individuals association testing accounting for family structure was conducted using the *-fastAssoc* option in MERLIN⁵³ or the *-mmscore*⁵⁴ option implemented in GenABEL⁵⁵. Before meta-analysis, we removed variants with $MAF < 0.01$, and with imputation quality scores less than 0.3.

Ancestry specific meta-analyses (European-specific and Asian-specific) and joint meta-analysis were performed using the inverse variance fixed effect scheme implemented in the software METAL⁵⁶. The 'genomic inflation' correction option was used in METAL⁵⁶ and applied to all input files. We also computed the test statistics for heterogeneity of effect among studies for each variant using Cochran's Q -test. We removed variants with heterogeneity P -value < 0.001 from both European-specific and Asian-specific meta-analyses. Moreover, we focused on variants that were present in more than 25% of participating studies in the European-specific meta-analysis (at least four studies) and the Asian-specific meta-analysis (at least two studies). Finally, to detect additional loci associated with CCT, we performed a fixed-effect cross ancestry meta-analysis.

Selecting independent variants. We applied the conditional and joint (CoJo) analysis approach⁵⁷ implemented in the software Genome-wide Complex Trait Analysis⁵⁸ (GCTA) on European-specific meta-analysis results in order to identify potentially independent signals within the same genomic regions. For this CoJo analysis we used 1000 genomes phase 1 imputed data from Blue Mountain Eye Study (BMES) population cohort comprising 2582 individuals of European ancestry to calculate linkage disequilibrium (LD) patterns. We used the software GTOOL-v0.7.5 (<http://www.well.ox.ac.uk/%7Ecfreeman/software/gwas/gtool.html>) to convert BMES IMPUTE2 data (both SNPs and Indels) to the plink format. This conversion changes A/T/G/C/I/D/R based allele coding to 1 or 2 (first and second allele). We extracted variant IDs, hg19 genomic locations and converted A/T/G/C/I/D/R (from 1/2 based allele coding) for all 16,666,330 available variants ($MAF > 0.01$) from BMES data and merged it with the European-specific meta-analysis result file based on hg19 genomic location. Further quality checking was done by plotting the allele frequencies of the allele 1 of variants in chromosome 22 in the BMES cohort and European-specific meta-analysis summary file. The edited European-specific meta-analysis summary file with 1/2 allele coding was used as an input for the CoJo analysis. In the CoJo analysis we considered 5×10^{-8} as the genome-wide significant threshold. We did not perform CoJo analysis in the Asian studies because the various Asian sub-studies (Indian, Malay, Chinese) had

differing ancestry within Asia and we did not have access to a suitably large (i.e., $N > 2000$) reference genotype data set for each Asian sub-population.

Gene-based analysis. We performed gene-based association testing using the VEGAS2 software²⁰. VEGAS2 is an extension of the Versatile Gene-based Association Study (VEGAS) approach⁵⁹ that uses 1000 genomes reference data to estimate LD between variants and provides a test using a more flexible gene boundary. For this analysis, we considered '-10 kbloc' parameter, which assigns all variants in the gene or within 10 kb on either side of a gene's transcription site to compute a gene-based P -value. We performed analysis using the default '-top 100' test that uses all (100%) variants assigned to a gene to compute gene-based P -value. We used 1000 Genomes phase 1 European and Asian populations to compute LD between variants for European-specific and Asian-specific gene-based analysis respectively. Finally, we meta-analysed the European-specific and Asian-specific gene-based results using Fisher's method for combining P -values.

Analysis of case-control cohorts. We tested the lead CCT-associated SNPs in two keratoconus datasets with 933 cases and 5946 controls and two POAG datasets with 5008 cases and 35,472 controls. Details of the disease cohorts can be found in the Supplementary Note 1. For both keratoconus and POAG we meta-analysed the association results for individual study samples using a fixed effect approach. The significance threshold for replication was established using the Bonferroni method for multiple testing correction.

CCT-associated loci and Mendelian diseases. We assessed whether the CCT-associated loci overlapped with candidate genes for rare Mendelian diseases. For this analysis we downloaded the most up-to-date annotations of genes to the Mendelian disease from the Online Mendelian Inheritance in Man (OMIM) portal⁶⁰ on 26th July 2016. We converted the genomic locations of CCT-associated variants from hg19 (or GRCh37) to the GRCh38 human genome build using the software liftOver^{61,62} and extracted all gene transcription start sites that lie within the 1 mega-base (Mb) on either side of a given variant.

Identifying regulatory variants. Using the software HaploReg (version 4.1)²⁵ and RegulomeDB v1.1²², we investigated regulatory annotations for variants in LD ($r^2 > 0.8$, 1000 genomes CEU) with the CCT-associated SNPs. To prioritize functional SNPs, we first used HaploRegv4.1 to extract all variants in LD with the 54 independent index SNPs and examined whether variants overlapped with regulatory elements of the ENCODE data, with the caveat that those do not include corneal tissue or cell lines data. We then used the RegulomeDB score to assess their potential functional consequence, as described previously⁶³. Tissue-enrichment and gene prioritization analyses were performed with the DEPICT²³ framework, using independent CCT genome-wide significant SNPs. We also investigated the expression of functionally relevant genes in associated loci using the Ocular Tissue Database, <https://genome.uiowa.edu/otdb/>, in which gene expression is indicated as Affymetrix Probe Logarithmic Intensity Error (PLIER) normalized value (with normalization in PLIER as described in Wagner et al.,⁴³). Further, we used GARFIELD to assess enrichment of CCT association signals in regulatory features, using the 1005 features extracted from ENCODE, GENCODE and Roadmap Epigenomics projects provided by the software developers.

Pathways analysis based on VEGAS2 gene-based P -values. We adopted the resampling approach to perform pathway analyses using VEGAS2 derived gene-based P -values considering a '-10 kbloc' and '-200 kbloc' parameters respectively. The latter was performed to capture a larger number of nearby genes, in case the causal SNP or SNPs operate via long distance effects on genes in the wider region. The resampling approach performs a competitive test in which each gene-set is benchmarked against the 'typical' set of the same size. For individual gene-set, firstly we computed observed summed χ^2 statistics by converting gene-based P -values of annotated genes to upper tail χ^2 statistics with 1 degree of freedom. If two or more genes in a gene-set were located less than 500 kb of individual transcription sites, then only one gene was selected when computing the observed summed χ^2 statistics and the other neighbouring genes were dropped out. This step might lead to loss of information but it ensures that the association of a gene-set is not driven by variants in LD. Following this, the same numbers of genes as present in a given gene set were repeatedly drawn at random from all set of genes used in the study and summed to generate the distribution of expected summed χ^2 statistics. Finally, the empirical P -value of association of a gene-set is computed by comparing the observed summed χ^2 statistics against the distribution of expected summed χ^2 statistics using following formula:

$$\text{EmpP} = \frac{\sum_{i=1}^N I(\chi^{2*} \geq \chi^2) + 1}{N + 1}$$

where $I()$ is an indicator function which denotes whether a summed χ^2 statistics from a random draw (χ^{2*}) was equal to or more than the observed summed χ^2 statistics (χ^2), and N is the total number of random draws performed to compute the distribution of expected summed χ^2 statistics.

We performed separate European-specific and Asian-specific pathway analysis, and further combined the two ethnic-specific pathway *P*-values using the Fisher's method. For pathway analysis, we considered the Biosystem's pathways or gene-sets comprising minimum 10 and maximum 1000 genes⁶⁴. In total 9981 gene-sets with 16,503 unique annotated genes were analysed. The processed Biosystems pathway/gene-set annotation file is available on the VEGAS2 webpage (<https://vegas2.qimrberghofer.edu.au/>).

Pathway analysis using INRICH. We also tested if single variants with association *P*-values less than 1×10^{-4} were enriched in the Biosystem's pathways. For this analysis, we used the INRICH approach, which assumes a hypergeometric distribution for the null hypothesis that a pathway is not enriched with associated variants. To create LD-independent genomic regions to be tested for enrichment, we performed LD clumping with PLINK (--clump-p1 1×10^{-4} --clump-p2 0.05 --clump-r2 0.5 --clump-range-border 20), using the 1000 Genomes European and Asian reference data, for European-specific and Asian-specific gene-set enrichment analyses respectively.

Pathway analysis using Ingenuity Pathway Analysis. To select the genes included in the IPA®, we extracted the genes \pm 200 kb of the lead SNP and further chose those that were expressed in the cornea (Supplementary Table 12). Corneal expression levels were retrieved from the Ocular Tissue Database⁴³. A gene list including 162 genes was used to run the IPA "Core-Analysis". Parameters of the analysis included (1) the Ingenuity Knowledge Base (Genes only) as the reference set, (2) including direct and indirect relationships, (3) experimentally observed, (4) from mammal species, (5) using all tissues and cell lines. Results were corrected for multiple testing using the Benjamini-Hochberg multiple testing correction as implemented in IPA.

URLs. GARFIELD software is available in a standalone version at <http://www.ebi.ac.uk/birney-srv/GARFIELD/> and as a Bioconductor package at <http://bioconductor.org/packages/release/bioc/html/garfield.html>.

Data availability. Summary association statistics results that support the findings of this study have been deposited in <http://hdl.handle.net/10283/2976>.

Received: 24 June 2017 Accepted: 2 March 2018

Published online: 14 May 2018

References

- Dimasi, D. P., Burdon, K. P. & Craig, J. E. The genetics of central corneal thickness. *Br. J. Ophthalmol.* **94**, 971–976 (2010).
- Landers, J. A. et al. Heritability of central corneal thickness in nuclear families. *Invest. Ophthalmol. Vis. Sci.* **50**, 4087–4090 (2009).
- Toh, T. et al. Central corneal thickness is highly heritable: the twin eye studies. *Invest. Ophthalmol. Vis. Sci.* **46**, 3718–3722 (2005).
- Zheng, Y. et al. Heritability of central corneal thickness in Chinese: the Guangzhou Twin Eye Study. *Invest. Ophthalmol. Vis. Sci.* **49**, 4303–4307 (2008).
- Villani, E. et al. The cornea in classic type Ehlers-Danlos syndrome: macro- and microstructural changes. *Invest. Ophthalmol. Vis. Sci.* **54**, 8062–8068 (2013).
- Dimasi, D. P. et al. Novel quantitative trait loci for central corneal thickness identified by candidate gene analysis of osteogenesis imperfecta genes. *Hum. Genet.* **127**, 33–44 (2010).
- Heur, M. et al. The value of keratometry and central corneal thickness measurements in the clinical diagnosis of Marfan syndrome. *Am. J. Ophthalmol.* **145**, 997–1001 (2008).
- Naderan, M., Shoar, S., Rezagholizadeh, F., Zolfaghari, M. & Naderan, M. Characteristics and associations of keratoconus patients. *Cont. Lens. Anterior Eye* **38**, 199–205 (2015).
- Song, C. et al. Risk calculation variability over time in ocular hypertensive subjects. *J. Glaucoma* **23**, 1–4 (2014).
- Gordon, M. O. et al. The Ocular Hypertension Treatment Study: baseline factors that predict the onset of primary open-angle glaucoma. *Arch. Ophthalmol.* **120**, 714–720; discussion 829–830 (2002).
- Kim, J. W. & Chen, P. P. Central corneal pachymetry and visual field progression in patients with open-angle glaucoma. *Ophthalmology* **111**, 2126–2132 (2004).
- Herndon, L. W., Weizer, J. S. & Stinnett, S. S. Central corneal thickness as a risk factor for advanced glaucoma damage. *Arch. Ophthalmol.* **122**, 17–21 (2004).
- Parker, J. S., van Dijk, K. & Melles, G. R. Treatment options for advanced keratoconus: a review. *Surv. Ophthalmol.* **60**, 459–480 (2015).
- Rabinowitz, Y. S. Keratoconus. *Surv. Ophthalmol.* **42**, 297–319 (1998).
- Pearson, A. R., Soneji, B., Sarvananthan, N. & Sandford-Smith, J. H. Does ethnic origin influence the incidence or severity of keratoconus? *Eye* **14**, 625–628 (2000).
- Quigley, H. A. & Broman, A. T. The number of people with glaucoma worldwide in 2010 and 2020. *Br. J. Ophthalmol.* **90**, 262–267 (2006).
- Lu, Y. et al. Genome-wide association analyses identify multiple loci associated with central corneal thickness and keratoconus. *Nat. Genet.* **45**, 155–163 (2013).
- Cuellar-Partida, G. et al. WNT10A exonic variant increases the risk of keratoconus by decreasing corneal thickness. *Hum. Mol. Genet.* **24**, 5060–5068 (2015).
- Mitchell, P., Smith, W., Attebo, K. & Wang, J. J. Prevalence of age-related maculopathy in Australia. The Blue Mountains Eye Study. *Ophthalmology* **102**, 1450–1460 (1995).
- Mishra, A. & Macgregor, S. VEGAS2: software for more flexible gene-based testing. *Twin Res. Hum. Genet.* **18**, 86–91 (2015).
- Riazuddin, S. A., Vasanth, S., Katsanis, N. & Gottsch, J. D. Mutations in AGBL1 cause dominant late-onset Fuchs corneal dystrophy and alter protein-protein interaction with TCF4. *Am. J. Hum. Genet.* **93**, 758–764 (2013).
- Boyle, A. P. et al. Annotation of functional variation in personal genomes using RegulomeDB. *Genome Res.* **22**, 1790–1797 (2012).
- Pers, T. H. et al. Biological interpretation of genome-wide association studies using predicted gene functions. *Nat. Commun.* **6**, 5890 (2015).
- Anastassiou, D. et al. Human cancer cells express Slug-based epithelial-mesenchymal transition gene expression signature obtained in vivo. *BMC Cancer* **11**, 529 (2011).
- Ward, L. D. & Kellis, M. HaploReg: a resource for exploring chromatin states, conservation, and regulatory motif alterations within sets of genetically linked variants. *Nucleic Acids Res.* **40**, D930–D934 (2012).
- Consortium, G. T. The Genotype-Tissue Expression (GTEx) project. *Nat. Genet.* **45**, 580–585 (2013).
- Saika, S. et al. TGFbeta2 in corneal morphogenesis during mouse embryonic development. *Dev. Biol.* **240**, 419–432 (2001).
- Liu, C. Y., Birk, D. E., Hassell, J. R., Kane, B. & Kao, W. W. Keratocan-deficient mice display alterations in corneal structure. *J. Biol. Chem.* **278**, 21672–21677 (2003).
- White, T. L. et al. The structural role of elastic fibers in the cornea investigated using a mouse model for Marfan syndrome. *Invest. Ophthalmol. Vis. Sci.* **58**, 2106–2116 (2017).
- Saika, S. et al. Role of lumican in the corneal epithelium during wound healing. *J. Biol. Chem.* **275**, 2607–2612 (2000).
- Chakravarti, S. et al. Lumican regulates collagen fibril assembly: skin fragility and corneal opacity in the absence of lumican. *J. Cell Biol.* **141**, 1277–1286 (1998).
- Yeh, L. K. et al. Knockdown of zebrafish lumican gene (zlum) causes scleral thinning and increased size of scleral coats. *J. Biol. Chem.* **285**, 28141–28155 (2010).
- Hemmavanh, C., Koch, M., Birk, D. E. & Espana, E. M. Abnormal corneal endothelial maturation in collagen XII and XIV null mice. *Invest. Ophthalmol. Vis. Sci.* **54**, 3297–3308 (2013).
- Li, S. W. et al. Transgenic mice with inactive alleles for procollagen N-proteinase (ADAMTS-2) develop fragile skin and male sterility. *Biochem. J.* **355**, 271–278 (2001).
- Bredrup, C., Knappskog, P. M., Majewski, J., Rodahl, E. & Boman, H. Congenital stromal dystrophy of the cornea caused by a mutation in the decorin gene. *Invest. Ophthalmol. Vis. Sci.* **46**, 420–426 (2005).
- Otto, F. et al. Cbfa1, a candidate gene for cleidocranial dysplasia syndrome, is essential for osteoblast differentiation and bone development. *Cell* **89**, 765–771 (1997).
- Kaartinen, V. & Warburton, D. Fibrillin controls TGF-beta activation. *Nat. Genet.* **33**, 331–332 (2003).
- Schmidt, G., Hausser, H. & Kresse, H. Interaction of the small proteoglycan decorin with fibronectin. Involvement of the sequence NKISK of the core protein. *Biochem. J.* **280**, 411–414 (1991).
- Kim, J. H. et al. A novel mutation of the decorin gene identified in a Korean family with congenital hereditary stromal dystrophy. *Cornea* **30**, 1473–1477 (2011).
- Pellegata, N. S. et al. Mutations in KERA, encoding keratocan, cause cornea plana. *Nat. Genet.* **25**, 91–95 (2000).
- Khan, A., Al-Saif, A. & Kambouris, M. A novel KERA mutation associated with autosomal recessive cornea plana. *Ophthalmic Genet.* **25**, 147–152 (2004).
- Lin, H. J. et al. The association between lumican gene polymorphisms and high myopia. *Eye* **24**, 1093–1101 (2010).
- Wagner, A. H. et al. Exon-level expression profiling of ocular tissues. *Exp. Eye Res.* **111**, 105–111 (2013).
- Wu, F., Lee, S., Schumacher, M., Jun, A. & Chakravarti, S. Differential gene expression patterns of the developing and adult mouse cornea compared to the lens and tendon. *Exp. Eye Res.* **87**, 214–225 (2008).

45. Sultan, G. et al. Cornea in Marfan disease: orbscan and in vivo confocal microscopy analysis. *Invest. Ophthalmol. Vis. Sci.* **43**, 1757–1764 (2002).
46. Fan, Q. et al. Meta-analysis of gene-environment-wide association scans accounting for education level identifies additional loci for refractive error. *Nat. Commun.* **7**, 11008 (2016).
47. Colige, A. et al. Human Ehlers-Danlos syndrome type VII C and bovine dermatosparaxis are caused by mutations in the procollagen I N-proteinase gene. *Am. J. Hum. Genet.* **65**, 308–317 (1999).
48. Colige, A. et al. Novel types of mutation responsible for the dermatosparactic type of Ehlers-Danlos syndrome (Type VIIC) and common polymorphisms in the ADAMTS2 gene. *J. Invest. Dermatol.* **123**, 656–663 (2004).
49. Burkitt Wright, E. M. et al. Mutations in PRDM5 in brittle cornea syndrome identify a pathway regulating extracellular matrix development and maintenance. *Am. J. Hum. Genet.* **88**, 767–777 (2011).
50. Grubert, F. et al. Genetic control of chromatin states in humans involves local and distal chromosomal interactions. *Cell* **162**, 1051–1065 (2015).
51. Dimas, A. S. et al. Common regulatory variation impacts gene expression in a cell type-dependent manner. *Science* **325**, 1246–1250 (2009).
52. Springelkamp, H. et al. New insights into the genetics of primary open-angle glaucoma based on meta-analyses of intraocular pressure and optic disc characteristics. *Hum. Mol. Genet.* **26**, ddw399–ddw453 (2017).
53. Abecasis, G. R., Cherny, S. S., Cookson, W. O. & Cardon, L. R. Merlin—rapid analysis of dense genetic maps using sparse gene flow trees. *Nat. Genet.* **30**, 97–101 (2002).
54. Chen, W. M. & Abecasis, G. R. Estimating the power of variance component linkage analysis in large pedigrees. *Genet. Epidemiol.* **30**, 471–484 (2006).
55. Aulchenko, Y. S., Ripke, S., Isaacs, A. & van Duijn, C. M. GenABEL: an R library for genome-wide association analysis. *Bioinformatics* **23**, 1294–1296 (2007).
56. Willer, C. J., Li, Y. & Abecasis, G. R. METAL: fast and efficient meta-analysis of genomewide association scans. *Bioinformatics* **26**, 2190–2191 (2010).
57. Yang, J. et al. Conditional and joint multiple-SNP analysis of GWAS summary statistics identifies additional variants influencing complex traits. *Nat. Genet.* **44**, S1–S3 (2012).
58. Yang, J., Lee, S. H., Goddard, M. E. & Visscher, P. M. GCTA: a tool for genome-wide complex trait analysis. *Am. J. Hum. Genet.* **88**, 76–82 (2011).
59. Liu, J. Z. et al. A versatile gene-based test for genome-wide association studies. *Am. J. Hum. Genet.* **87**, 139–145 (2010).
60. Amberger, J. S., Bocchini, C. A., Schiettecatte, F., Scott, A. F. & Hamosh, A. OMIM.org: Online Mendelian Inheritance in Man (OMIM(R)), an online catalog of human genes and genetic disorders. *Nucleic Acids Res.* **43**, D789–D798 (2015).
61. Kent, W. J., Baertsch, R., Hinrichs, A., Miller, W. & Haussler, D. Evolution's cauldron: duplication, deletion, and rearrangement in the mouse and human genomes. *Proc. Natl Acad. Sci. USA* **100**, 11484–11489 (2003).
62. Rosenbloom, K. R. et al. The UCSC Genome Browser database: 2015 update. *Nucleic Acids Res.* **43**, D670–D681 (2015).
63. Schaub, M. A., Boyle, A. P., Kundaje, A., Batzoglou, S. & Snyder, M. Linking disease associations with regulatory information in the human genome. *Genome Res.* **22**, 1748–1759 (2012).
64. Geer, L. Y. et al. The NCBI BioSystems database. *Nucleic Acids Res.* **38**, D492–D496 (2010).
65. Gao, X. et al. A genome-wide association study of central corneal thickness in Latinos. *Invest. Ophthalmol. Vis. Sci.* **54**, 2435–2443 (2013).
66. Vithana, E. N. et al. Collagen-related genes influence the glaucoma risk factor, central corneal thickness. *Hum. Mol. Genet.* **20**, 649–658 (2011).
67. Hoehn, R. et al. Population-based meta-analysis in Caucasians confirms association with COL5A1 and ZNF469 but not COL8A2 with central corneal thickness. *Hum. Genet.* **131**, 1783–1793 (2012).
68. Cornes, B. K. et al. Identification of four novel variants that influence central corneal thickness in multi-ethnic Asian populations. *Hum. Mol. Genet.* **21**, 437–445 (2012).

Acknowledgements

We gratefully thank the invaluable contributions of all study participants and staff at the recruitment centers. Complete funding information and acknowledgements for each individual study can be found in the Supplementary Note 2.

Author contributions

Y.B., R.H., C.E.W., O.P., P.M., J.L.H., L.S.K., C.H., K.D.T., J.I.R., N.G.M., T.Z., R.A.M., S.E.S., S.E.M.L., M.E.B., J.F.W., A.G.U., E.N.V., P.J.F., A.W.H., L.R.P., G.W.M., C.C.W.K., T.A., N.P., D.A.M., C.J.H., C.-Y.C., J.E.C., Y.S.R., J.L.W., K.P.B., C.MvD., and S.M., contributed samples. A.I.I., A.M., V.V., R.H., H.S., G.C.P., P.G., J.N.C.B., X.L., S.Y., A.N., A.P.K., Y.C.T., Y.S., E.S., E.M.V.L., P.B., I.S., T.B., S.E.M.L., J.H.K., P.G.H., C.C.K., K.P.B. and S.M., were involved in data analysis. D.S., L.R.P., C.M.vD., J.L.W., S.M., K.P.B., C.C. W.K., provided funding. Blue Mountains Eye Study- GWAS Group, NEIGHBORHOOD Consortium, and Wellcome Trust Case Control Consortium 2 (WTCCC2) were responsible for study-specific data. A.I.I., A.M., V.V., L.R.P., D.A.M., J.L.W., C.MvD., and S.M., drafted the manuscript. Y.B., D.S., J.L.H., J.I.R., J.J., T.Y.W., A.W.H., L.R.P., T.A., D.A.M., C.J.H., C.-Y.C., J.E.C., Y.S.R., K.P.B., C.MvD., and S.M., conceived the study. All authors critically reviewed the manuscript.

Additional information

Supplementary Information accompanies this paper at <https://doi.org/10.1038/s41467-018-03646-6>.

Competing interests: The authors declare no competing interests.

Reprints and permission information is available online at <http://npg.nature.com/reprintsandpermissions/>

Publisher's note: Springer Nature remains neutral with regard to jurisdictional claims in published maps and institutional affiliations.



Open Access This article is licensed under a Creative Commons Attribution 4.0 International License, which permits use, sharing, adaptation, distribution and reproduction in any medium or format, as long as you give appropriate credit to the original author(s) and the source, provide a link to the Creative Commons license, and indicate if changes were made. The images or other third party material in this article are included in the article's Creative Commons license, unless indicated otherwise in a credit line to the material. If material is not included in the article's Creative Commons license and your intended use is not permitted by statutory regulation or exceeds the permitted use, you will need to obtain permission directly from the copyright holder. To view a copy of this license, visit <http://creativecommons.org/licenses/by/4.0/>.

© The Author(s) 2018

Adriana I. Iglesias^{1,2,3}, Aniket Mishra⁴, Veronique Vitart⁵, Yelena Bykhovskaya^{6,7}, René Höhn^{8,9}, Henriët Springelkamp¹, Gabriel Cuellar-Partida¹⁰, Puya Gharahkhani¹⁰, Jessica N. Cooke Bailey^{11,12}, Colin E. Willoughby^{13,14}, Xiaohui Li^{15,16}, Seyhan Yazar^{5,17}, Abhishek Nag¹⁸, Anthony P. Khawaja^{19,20}, Ozren Polašek²¹, David Siscovick^{22,23}, Paul Mitchell²⁴, Yih Chung Tham²⁵, Jonathan L. Haines^{11,12}, Lisa S. Kearns²⁶, Caroline Hayward⁵, Yuan Shi²⁵, Elisabeth M. van Leeuwen¹, Kent D. Taylor^{15,16}, Blue Mountains Eye Study—GWAS group, Pieter Bonnemaier¹, Jerome I. Rotter^{15,16}, Nicholas G. Martin²⁷, Tanja Zeller^{28,29}, Richard A. Mills³⁰, Emmanuelle Souzeau³⁰, Sandra E. Staffieri²⁶, Jost B. Jonas³¹, Irene Schmidtman³², Thibaud Boutin⁵, Jae H. Kang³³, Sionne E.M. Lucas³⁴, Tien Yin Wong^{25,35,36}, Manfred E. Beutel³⁷, James F. Wilson^{5,38}, NEIGHBORHOOD Consortium, Wellcome Trust Case Control

Consortium 2 (WTCCC2), André G. Uitterlinden^{2,39,40}, Eranga N. Vithana²⁵, Paul J. Foster²⁰, Pirro G. Hysi¹⁸, Alex W. Hewitt^{26,41}, Chiea Chuen Khor⁴², Louis R. Pasquale^{33,43}, Grant W. Montgomery^{27,44}, Caroline C.W. Klaver^{1,2,45}, Tin Aung^{25,35,36}, Norbert Pfeiffer⁸, David A. Mackey¹⁷, Christopher J. Hammond¹⁸, Ching-Yu Cheng^{25,35,36}, Jamie E. Craig³⁰, Yaron S. Rabinowitz^{6,7}, Janey L. Wiggs⁴³, Kathryn P. Burdon³⁴, Cornelia M. van Duijn² & Stuart MacGregor¹⁰

¹Department of Ophthalmology, Erasmus Medical Center, 3000 CA, Rotterdam, The Netherlands. ²Department of Epidemiology, Erasmus Medical Center, 3000 CA, Rotterdam, The Netherlands. ³Department of Clinical Genetics, Erasmus Medical Center, 3000 CA, Rotterdam, The Netherlands. ⁴University of Bordeaux, Bordeaux Population Health Research Center, INSERM UMR 1219, F-33000 Bordeaux, France. ⁵Institute of Genetics and Molecular Medicine, Medical Research Council Human Genetics Unit, University of Edinburgh, EH42XU Edinburgh, UK. ⁶Regenerative Medicine Institute and Department of Surgery, Cedars-Sinai Medical Center, CA 90048, Los Angeles, CA, USA. ⁷Cornea Genetic Eye Institute, CA 90048, Los Angeles, CA, USA. ⁸Department of Ophthalmology, University Medical Center Mainz, 55131 Mainz, Germany. ⁹Department of Ophthalmology, Inselspital, University Hospital Bern, University of Bern, Bern CH-3010, Switzerland. ¹⁰Statistical Genetics, QIMR Berghofer Medical Research Institute, QLD 4029, Brisbane, Australia. ¹¹Department of Population and Quantitative Health Sciences, Case Western Reserve University, OH 44106, Cleveland, OH, USA. ¹²Institute for Computational Biology, Case Western Reserve University, Cleveland, OH 44106, USA. ¹³Biomedical Sciences Research Institute, Ulster University, BT52 1SA Belfast, Northern Ireland, UK. ¹⁴Royal Victoria Hospital, Belfast Health and Social Care Trust, BT12 6BA Belfast, Northern Ireland, UK. ¹⁵Institute for Translational Genomics and Population Sciences and Department of Pediatrics, Los Angeles Biomedical Research Institute at Harbor-UCLA Medical Center, Torrance, CA 90509, CA, USA. ¹⁶Division of Genomic Outcomes, Departments of Pediatrics and Medicine, Harbor-UCLA Medical Center, Torrance, CA 90502, CA, USA. ¹⁷Centre for Ophthalmology and Visual Science, University of Western Australia, Lions Eye Institute, WA 6009, Perth, WA, Australia. ¹⁸Department of Twin Research and Genetic Epidemiology, King's College London, WC2R 2LS London, UK. ¹⁹Department of Public Health and Primary Care, Institute of Public Health, University of Cambridge School of Clinical Medicine, CB2 0SR Cambridge, UK. ²⁰NIHR Biomedical Research Centre, Moorfields Eye Hospital NHS Foundation Trust and UCL Institute of Ophthalmology, EC1V 9EL London, UK. ²¹Faculty of Medicine, University of Split, HR-21000 Split, Croatia. ²²Departments of Medicine and Epidemiology and Cardiovascular Health Research Unit, University of Washington, WA 98101, Washington, USA. ²³The New York Academy of Medicine, NY 10029, New York, NY, USA. ²⁴Centre for Vision Research, Department of Ophthalmology and Westmead Institute for Medical Research, University of Sydney, NSW 2145, Sydney, NSW, Australia. ²⁵Singapore Eye Research Institute, Singapore National Eye Centre, 168751 Singapore, Singapore. ²⁶Centre for Eye Research Australia, University of Melbourne, Royal Victorian Eye and Ear Hospital, VIC 3002, East Melbourne, Australia. ²⁷Department of Genetics and Computational Biology, QIMR Berghofer Medical Research Institute, QLD 4029, Brisbane, Australia. ²⁸Department of General and Interventional Cardiology, University Heart Center Hamburg, 20251 Hamburg, Germany. ²⁹German Center for Cardiovascular Research (DZHK), Partner Site Hamburg/Kiel/Lübeck, 20246 Hamburg, Germany. ³⁰Department of Ophthalmology, Flinders University, SA 5042, Adelaide, Australia. ³¹Department of Ophthalmology, Medical Faculty Mannheim of the Ruprecht-Karls-University of Heidelberg, 68167 Mannheim, Germany. ³²Institute for Medical Biostatistics, Epidemiology and Informatics, University Medical Center Mainz, 55131 Mainz, Germany. ³³Channing Division of Network Medicine, Brigham and Women's Hospital, Boston, MA 02115, MA, USA. ³⁴Menzies Institute for Medical Research, University of Tasmania, Hobart, TAS 7005, TAS, Australia. ³⁵Ophthalmology & Visual Sciences Academic Clinical Program (Eye ACP), Duke-NUS Medical School, 169857 Singapore, Singapore. ³⁶Department of Ophthalmology, Yong Loo Lin School of Medicine, National University of Singapore, Singapore 117549, Singapore. ³⁷Department of Psychosomatic Medicine and Psychotherapy, University Medical Center Mainz, Mainz 55131, Germany. ³⁸Centre for Global Health Research, Usher Institute for Population Health Sciences and Informatics, University of Edinburgh, EH16 4UX Edinburgh, UK. ³⁹Department of Internal Medicine, Erasmus Medical Center, 3000 CA, Rotterdam, The Netherlands. ⁴⁰Netherlands Consortium for Healthy Ageing, Netherlands Genomics Initiative, 2593 HW, The Hague, The Netherlands. ⁴¹School of Medicine, Menzies Institute for Medical Research, University of Tasmania, Hobart, TAS 7005, TAS, Australia. ⁴²Genome Institute of Singapore, 60 Biopolis Street, Singapore 138672, Singapore. ⁴³Department of Ophthalmology, Harvard Medical School and Massachusetts Eye and Ear Infirmary, Boston, MA 02114, MA, USA. ⁴⁴Institute for Molecular Bioscience, University of Queensland, QLD 4067, Brisbane, Australia. ⁴⁵Department of Ophthalmology, Radboud University Medical Center, 6525 GA, Nijmegen, The Netherlands. These authors contributed equally: Adriana I. Iglesias, Aniket Mishra, Veronique Vitart. These authors jointly supervised this work: Jamie E. Craig, Yaron S. Rabinowitz, Janey L. Wiggs, Kathryn P. Burdon, Cornelia M. van Duijn, Stuart MacGregor.

Blue Mountains Eye Study—GWAS group

Jie Jin Wang²⁴, Elena Rochtchina²⁴, John Attia⁴⁶, Rodney Scott⁴⁶, Elizabeth G. Holliday⁴⁶, Tien Yin Wong²⁶, Paul N. Baird²⁶, Jing Xie²⁶, Michael Inouye⁴⁷, Ananth Viswanathan²⁰ & Xueling Sim³⁶

⁴⁶University of Newcastle, Newcastle, NSW 2308, Australia. ⁴⁷Walter and Eliza Hall Institute of Medical Research, Melbourne, VIC 3052, VIC, Australia.

NEIGHBORHOOD Consortium

R. Rand Allingham⁴⁸, Murray H. Brilliant⁴⁹, Donald L. Budenz⁵⁰, William G. Christen⁵¹, John Finger^{52,53}, David S. Friedman⁵⁴, Douglas Gaasterland⁵⁵, Terry Gaasterland⁵⁶, Michael A. Hauser^{48,57}, Peter Kraft⁵⁸,

Richard K. Lee⁵⁹, Paul R. Lichter⁶⁰, Yutao Liu^{48,57}, Stephanie J. Loomis⁴³, Sayoko E. Moroi⁶⁰, Margaret A. Pericak-Vance⁶¹, Anthony Realini⁶², Julia E. Richards⁶⁰, Joel S. Schuman⁶³, William K. Scott⁶¹, Kuldev Singh⁶⁴, Arthur J. Sit⁶⁵, Douglas Vollrath⁶⁶, Robert N. Weinreb⁶⁷, Gadi Wollstein⁶³, Donald J. Zack⁵⁴ & Kang Zhang⁶⁷

⁴⁸Department of Ophthalmology, Duke University Medical Center, Durham, NC, 27705 NC, USA. ⁴⁹Center for Human Genetics, Marshfield Clinic Research Foundation, Marshfield, WI, USA. ⁵⁰Department of Ophthalmology, University of North Carolina, Chapel Hill, NC, 27517 NC, USA.

⁵¹Department of Medicine, Brigham and Women's Hospital, Boston, MA 02114 MA, USA. ⁵²Department of Ophthalmology, College of Medicine, University of Iowa, Iowa City, IA, 52242 IA, USA. ⁵³Department of Anatomy/Cell Biology, College of Medicine, University of Iowa, Iowa City, IA, 52242 IA, USA. ⁵⁴Wilmer Eye Institute, Johns Hopkins University, Baltimore, MD, 21287 MD, USA. ⁵⁵Eye Doctors of Washington, Chevy Chase, MD, 20815 MD, USA. ⁵⁶Scripps Genome Center, University of California at San Diego, San Diego, CA, 92037 CA, USA. ⁵⁷Department of Medicine, Duke University Medical Center, Durham, NC, 27710 NC, USA. ⁵⁸Department of Biostatistics, Harvard School of Public Health, Boston, MA, 02115 MA, USA. ⁵⁹Bascom Palmer Eye Institute, University of Miami Miller School of Medicine, Miami, FL, 33136 FL, USA. ⁶⁰Department of Ophthalmology and Visual Sciences, University of Michigan, Ann Arbor, MI, 48105 MI, USA. ⁶¹Institute for Human Genomics, University of Miami Miller School of Medicine, Miami, FL, 33136 FL, USA. ⁶²Department of Ophthalmology, WVU Eye Institute, Morgantown, WV, 26506 WV, USA. ⁶³Department of Ophthalmology, UPMC Eye Center, University of Pittsburgh, Pittsburgh, PA, 15213 PA, USA. ⁶⁴Department of Ophthalmology, Stanford University, Palo Alto, CA, 94303 CA, USA. ⁶⁵Department of Ophthalmology, Mayo Clinic, Rochester, MN, 55905 MN, USA. ⁶⁶Department of Genetics, Stanford University, Palo Alto, CA, 94305 CA, USA. ⁶⁷Department of Ophthalmology, Hamilton Eye Center, University of California, San Diego, CA, 92093 CA, USA

Wellcome Trust Case Control Consortium 2 (WTCCC2)

Peter Donnelly^{68,69}, Ines Barroso⁷⁰, Jenefer M. Blackwell^{71,72}, Elvira Bramon⁷³, Matthew A. Brown⁷⁴, Juan P. Casas^{75,76}, Aiden Corvin⁷⁷, Panos Deloukas⁷⁰, Audrey Duncanson⁷⁸, Janusz Jankowski^{79,80,81}, Hugh S. Markus⁸², Christopher G. Mathew⁸³, Colin N.A. Palmer⁸⁴, Robert Plomin⁸⁵, Anna Rautanen⁶⁸, Stephen J. Sawcer⁸⁶, Richard C. Trembath⁸³, Nicholas W. Wood⁸⁷, Chris C.A. Spencer⁶⁸, Gavin Band⁶⁸, Céline Bellenguez⁶⁸, Colin Freeman⁶⁸, Garrett Hellenthal⁶⁸, Eleni Giannoulatou⁶⁸, Matti Pirinen⁶⁸, Richard Pearson⁶⁸, Amy Strange⁶⁸, Zhan Su⁶⁸, Damjan Vukcevic⁶⁸, Cordelia Langford⁷⁰, Sarah E. Hunt⁷⁰, Sarah Edkins⁷⁰, Rhian Gwilliam⁷⁰, Hannah Blackburn⁷⁰, Suzannah J. Bumpstead⁷⁰, Serge Dronov⁷⁰, Matthew Gillman⁷⁰, Emma Gray⁷⁰, Naomi Hammond⁷⁰, Alagurevathi Jayakumar⁷⁰, Owen T. McCann⁷⁰, Jennifer Liddle⁷⁰, Simon C. Potter⁷⁰, Radhi Ravindrarajah⁷⁰, Michelle Ricketts⁷⁰, Matthew Waller⁷⁰, Paul Weston⁷⁰, Sara Widada⁷⁰ & Pamela Whittaker⁷⁰

⁶⁸Wellcome Trust Centre for Human Genetics, University of Oxford, Roosevelt Drive, Oxford OX37BN, UK. ⁶⁹Dept Statistics, University of Oxford, Oxford OX1 3TG, UK. ⁷⁰Wellcome Trust Sanger Institute, Wellcome Trust Genome Campus, Hinxton, Cambridge CB10 1SA, UK. ⁷¹Telethon Institute for Child Health Research, Centre for Child Health Research, University of Western Australia, 100 Roberts Road, Subiaco, WA 6008, Australia. ⁷²Cambridge Institute for Medical Research, University of Cambridge School of Clinical Medicine, Cambridge CB2 0XY, UK.

⁷³Department of Psychosis Studies, NIHR Biomedical Research Centre for Mental Health at the Institute of Psychiatry, King's College London and The South London and Maudsley NHS Foundation Trust, Denmark Hill, London SE5 8AF, UK. ⁷⁴University of Queensland Diamantina Institute, Brisbane, QLD 4102, QLD, Australia. ⁷⁵Dept Epidemiology and Population Health, London School of Hygiene and Tropical Medicine, London WC1E 7HT, UK. ⁷⁶Dept Epidemiology and Public Health, University College London, London WC1E 6BT, UK. ⁷⁷Neuropsychiatric Genetics Research Group, Institute of Molecular Medicine, Trinity College Dublin, Dublin 2, Eire, Ireland. ⁷⁸Molecular and Physiological Sciences, The Wellcome Trust, London NW1 2BE, UK. ⁷⁹Department of Oncology, Old Road Campus, University of Oxford, Oxford OX3 7DQ, UK. ⁸⁰Digestive Diseases Centre, Leicester Royal Infirmary, Leicester LE7 7HH, UK. ⁸¹Centre for Digestive Diseases, Queen Mary University of London, London, E1 2AD, UK. ⁸²Clinical Neurosciences, St George's University of London, London SW17 0RE, UK. ⁸³King's College London Dept Medical and Molecular Genetics, King's Health Partners, Guy's Hospital, London SE1 9RT, UK. ⁸⁴Biomedical Research Centre, Ninewells Hospital and Medical School, Dundee DD1 9SY, UK. ⁸⁵King's College London Social, Genetic and Developmental Psychiatry Centre, Institute of Psychiatry, Denmark Hill, London SE5 8AF, UK.

⁸⁶University of Cambridge Dept Clinical Neurosciences, Addenbrooke's Hospital, Cambridge CB2 0QQ, UK. ⁸⁷Dept Molecular Neuroscience, Institute of Neurology, Queen Square, London WC1N 3BG, UK.