



**HAL**  
open science

## How can water quality be improved when the urban waste water directive has been fulfilled? A case study of the Lot river (France)

Josette Garnier, Antsiva Ramarson, Vincent Thieu, Julien Némery, Sylvain Théry, Gilles Billen, Alexandra Coynel

### ► To cite this version:

Josette Garnier, Antsiva Ramarson, Vincent Thieu, Julien Némery, Sylvain Théry, et al.. How can water quality be improved when the urban waste water directive has been fulfilled? A case study of the Lot river (France). *Environmental Science and Pollution Research*, 2018, 25 (12), pp.11924-11939. 10.1007/s11356-018-1428-1 . hal-01961860

**HAL Id: hal-01961860**

**<https://hal.sorbonne-universite.fr/hal-01961860>**

Submitted on 20 Dec 2018

**HAL** is a multi-disciplinary open access archive for the deposit and dissemination of scientific research documents, whether they are published or not. The documents may come from teaching and research institutions in France or abroad, or from public or private research centers.

L'archive ouverte pluridisciplinaire **HAL**, est destinée au dépôt et à la diffusion de documents scientifiques de niveau recherche, publiés ou non, émanant des établissements d'enseignement et de recherche français ou étrangers, des laboratoires publics ou privés.

# How can water quality be improved when the urban waste water directive has been fulfilled? A case study of the Lot river (France)

Josette Garnier<sup>1</sup> · Antsiva Ramarson<sup>1</sup> · Vincent Thieu<sup>1</sup> · Julien Némery<sup>2</sup> · Sylvain Théry<sup>3</sup> · Gilles Billen<sup>1</sup> · Alexandra Coyne<sup>4</sup>

## Abstract

The Lot river, a major tributary of the downstream Garonne river, the largest river on the Northern side of the Pyrenees Mountains, was intensively studied in the 1970s. A pioneering program called “Lot Rivière Claire” provided a diagnosis of water quality at the scale of the whole watershed and proposed an ambitious program to manage nutrient pollution and eutrophication largely caused by urban wastewater releases. Later on, the implementation of European directives from 1991 to 2000 resulted in the nearly complete treatment of point sources of pollution in spite of a doubling of the basin’s population. At the outlet of the Lot river, ammonium and phosphate contamination which respectively peaked to 1 mg N-NH<sub>4</sub> L<sup>-1</sup> and 0.3 mg P-PO<sub>4</sub> L<sup>-1</sup> in the 1980s returned to much lower levels in recent years (0.06 mg N-NH<sub>4</sub> L<sup>-1</sup> and 0.02 mg P-PO<sub>4</sub> L<sup>-1</sup>), a reduction by a factor 15. However, during this time, nitrate contamination has regularly increased since the 1980s, from 0.5 to 1.2 mg N-NO<sub>3</sub> L<sup>-1</sup> in average, owing to the intensification of agriculture and livestock farming. Application of the Riverstrahler model allowed us to simulate the water quality of the Lot drainage network for the 2002–2014 period. We showed that, with respect to algal requirements, phosphorus and silica are well balanced, but nitrogen remains largely in excess over phosphorus and silica. This imbalance can be problematic for the ecological status of the water bodies. Using the model, for simulating various scenarios of watershed management, we showed that improvement of urban wastewater treatment would not result in any significant change in the river’s water quality. Even though arable land occupies a rather limited fraction of the watershed area, only the adoption of better farming practices or more radical changes in the agro-food system could reverse the trend of increasing nitrate contamination.

**Keywords** Nutrient fluxes · River water quality · Biogeochemical modeling · Lot river

---

Responsible editor: Philippe Garrigues

---

✉ Josette Garnier  
josette.garnier@upmc.fr

<sup>1</sup> UMR 7619 Metis (Sorbonne Université—CNRS—EPHE) BP 123, Tour 56-55, Etage 4, 4 Place Jussieu, 75005 Paris, France

<sup>2</sup> Université Grenoble Alpes, CNRS, IRD, Grenoble INP (Institute of Engineering Univ. Grenoble Alpes), IGE, F-38000 Grenoble, France

<sup>3</sup> CNRS FR-3020 FIRE, BP 123, Tour 56-55, Etage 4, 4 Place Jussieu, 75005 Paris, France

<sup>4</sup> Université de Bordeaux, UMR 5805 EPOC—OASU—allée Geoffroy Saint-Hilaire, 33615 Pessac, France

## Introduction

One of the major water policy tools in Europe, the Urban Waste Water Treatment Directive (UWWTD 1991, Council Directive 91/271/EEC), was adopted on 21 May 1991 to protect the quality of water subject to oxygen depletion, nutrient pollution, and eutrophication from the adverse effects of urban and industrial wastewater discharges. The Directive requires an appropriate collection of sewage and regulates discharges of wastewater by specifying the minimum type of treatment to be provided and setting maximum emission limits of the major pollutants (organic load and nutrients). Later, the Water Framework Directive (WFD 2000) was dedicated to providing coherence to legislation with EU policies in the domain of

water, and the watershed scale was adopted as a management scale with the aim of achieving good ecological status of water masses in 2015. These two directives already considerably contributed to improving water quality, most particularly by reducing organic carbon (hence improving oxygenation) and phosphorus (Passy et al. 2013; Romero et al. 2013, 2016).

The Lot river is a major tributary of the downstream Garonne river, the largest river on the northern side of the Pyrenees Mountains, which forms the Gironde Estuary with the Dordogne river. The Lot river, draining an area of 11,686 km<sup>2</sup>, has its source in the Massif Central (Mont Lozère, at 1295 m elevation). The construction of reservoirs in the upstream watershed, beginning in the 1930s, reached a current water storage capacity of 560 Mm<sup>3</sup>, with often uncoordinated regulation of water uptake and release, which seriously perturbed the hydrological regime (Maneux et al. 2001). Another major problem of the Lot river is its historical polymetallic contamination, notably in a small catchment (the Riou Mort river), due to former mining and ore-treatment activities (e.g., Audry et al. 2004a,b; Coynel et al. 2009). The downstream catchment of the Riou-Mort (150 km<sup>2</sup>; mean monthly water discharges, ~0.3 to 3 m<sup>3</sup>/s) drains former coal mining and waste disposal (mostly industrial waste from the now-abandoned zinc ore treatment) from the Société des Mines et Fonderies de Zinc de la Vieille-Montagne mining company, founded in 1837, which in 2001 evolved into Umicore, a global materials technology and recycling group.

Already two decades before the Waste Water Treatment Directive, in 1969, a pioneering program (Lot Rivière Claire), dedicated to the integrated protection of the river, was launched on the Lot river by a French association for the development of the Lot Valley (Association pour l'Aménagement de la Vallée du Lot) with two main objectives: to develop a better understanding of the ecology of the river and to promote the economic and environmental development of the Lot Valley.

At that time, better sharing of the water resources became necessary (Décamps 1978), because of increasing water use for hydropower and rising water requirement for drinking water, industry, agriculture, and tourism. The development plan of the area was designed through the dialog with all concerned of French administrative institutions (five departments and four regions) that were willing to adopt an integrative spatial approach to satisfy the needs of these multiple uses.

The resulting program for land development in 1989 provided coordinated management of water release during low summer water beneficial for other economic activities and the ecological state of the river. Decantation systems were installed as soon as 1975 by the mining industries to reduced suspended solid and associated contaminants, and more efficient measures were taken to control the situation (remediation of polluted soils), significantly reducing contamination

(Lapaquellerie et al. 1995; Blanc et al. 1999; Audry et al. 2004a,b; Coynel et al. 2007; Morin et al. 2008; Shinn et al. 2009; Arini et al. 2011).

Besides the agreement found for regulating water fluxes and decreasing the pollution resulting from mining industries, considerable efforts were dedicated to reducing the nutrient and organic matter released from domestic wastewater and agro-food industries.

Décamps (1978) evaluated the point sources of urban wastewater at 232,000 inhabitant equivalents (inh. eq.) plus 96,000 inh. eq. from industrial releases. He projected that the total wastewater collection could reach 560,000 inh. eq. by the mid-1980s. An ambitious program of wastewater treatment was launched, anticipating the obligations later stipulated by the European Urban Waste Water Directive (UWWD 1991) and the later Water Framework Directive (WFD 2000). The success of these measures was manifest, particularly in terms of ammonium and phosphate contamination.

Although low flow in summer can favor algal development to a level typical for meso-eutrophic systems, phytoplankton composition was dominated by diatoms and Chlorophyceae, and only a small proportion of harmful algae, such as Cyanobacteria, was found (Capblancq and Dauta 1978). Despite that eutrophication has not been yet an important environmental problem in the Lot, it remains a threat in dry summer when many river reaches tend toward functioning as stagnant systems characterized by water column stratification (Capblancq and Toureng 1978), leading to harmful algal biomass as was observed in the Tarn river, another major tributary of the Garonne river (Bertrand et al. 2004). This type of toxic algae events have indeed killed several dogs in 2011 (<http://www.europe1.fr/france/des-algues-toxiques-dans-le-tarn-656657>), and alerts are regularly published in local or national news papers (<http://www.leparisien.fr/societe/attention-aux-algues-tueuses-de-chiens-24-08-2017-7209819.php>; [http://www.larep.fr/orleans/environnement/2017/08/23/cyanobacteries-l-ars-rappelle-les-mesures-de-prevention\\_12524110.html](http://www.larep.fr/orleans/environnement/2017/08/23/cyanobacteries-l-ars-rappelle-les-mesures-de-prevention_12524110.html)).

The aim of the present study was to revisit the ecological functioning of the Lot river related to nutrients and subsequent possible eutrophication or toxic algal development after the wastewater treatment programs had been completed. Indeed, although wastewater plants have greatly improved their treatments in European countries, decreasing phosphorus and nitrogen load (in France: Passy et al. 2013; Romero et al. 2013; Romero et al. 2016; Minaudo et al. 2015; in other EU countries: Ulen et al. 2007; Bouraoui and Grizzetti 2011), nitrate contamination due to intensive agriculture has increased in the past four decades, or at best has plateaued. Although agricultural measures have been applied to reduce the use of industrial fertilizers, by introducing good agricultural practices (split application of fertilizers, preventing leaching of bared winter soils by introducing catch crops, etc.), in most cases,

these measures have failed to effectively reduce nitrate contamination (Davis et al. 2012; Volk et al. 2009; Garnier et al. 2014).

As a synthesizing tool in this endeavor, we implemented the Riverstrahler model, an ecological model of drainage network (Billen et al. 1994; Garnier et al. 1995, 2002), embedded into a GIS-Seneque environment (Ruelland et al. 2007), which, once validated, allows exploring scenarios of alternative water quality management. Differently from previous modeling approaches developed for the main branch of the Lot (Capblancq et al. 1982; Thébaud and Quotbi 1999), the Seneque-Riverstrahler model operates at the scale of the whole watershed and takes other ecological compartments than phytoplankton explicitly into account.

## Material and methods

### Study site

The Lot river watershed, located in southwestern France, covers a surface area of 11,686 km<sup>2</sup> (Fig. 1) for a mean annual water discharge of ~150 m<sup>3</sup>/s. Tributary of the Garonne river (55,000 km<sup>2</sup>) on its right bank, it is divided into three main geological zones: (i) igneous (basalts and granites) and metamorphic (micaschists and gneisses) rocks in the upstream watershed, (ii) Jurassic calcareous sedimentary rocks in the median watershed, and (iii) Tertiary and Quaternary alluvium deposits in the downstream watershed (Audry et al. 2010). The upstream basin is drained by two major tributaries, the Truyère and the upstream Lot, accounting for 47% of the total surface area (Fig. 1a) and 38% of the discharge at the downstream station, Temple-sur-Lot (km 305), close to Villeneuve-sur-Lot (Capblancq and Tourenq, 1978), about 20 km upstream of the confluence with the Garonne river, at 22 m altitude.

Being mostly under the influence of the Atlantic, it is also impacted by Mediterranean and mountainous conditions, leading to a complex hydrological regime (Tourenq et al. 1978). Reservoirs are mainly located on the Truyère river (538 out of 560 Mm<sup>3</sup>) and were impounded from 1933 to 1962 by Electricité de France (EDF), with uncoordinated management until 1989. Of the nine reservoirs of the Truyère, the Grandval and Sarrans Reservoirs account for the largest proportion of the total water stored.

The population of the Lot river currently totals 472,274 inhabitants (INSEE, 2013) (population density, 40.4 inhab. km<sup>-2</sup>), 16% concentrated in the major cities (Fig. 1b). Among the 348 wastewater treatment plants (WWTPs) located within the basin, 11 treat loads greater than 10,000 inhabitant equivalents (69% of the total amount of pollution emitted) and 20 WWTPs above 2000 inh. eq., together totaling 90% of the total inh. eq.

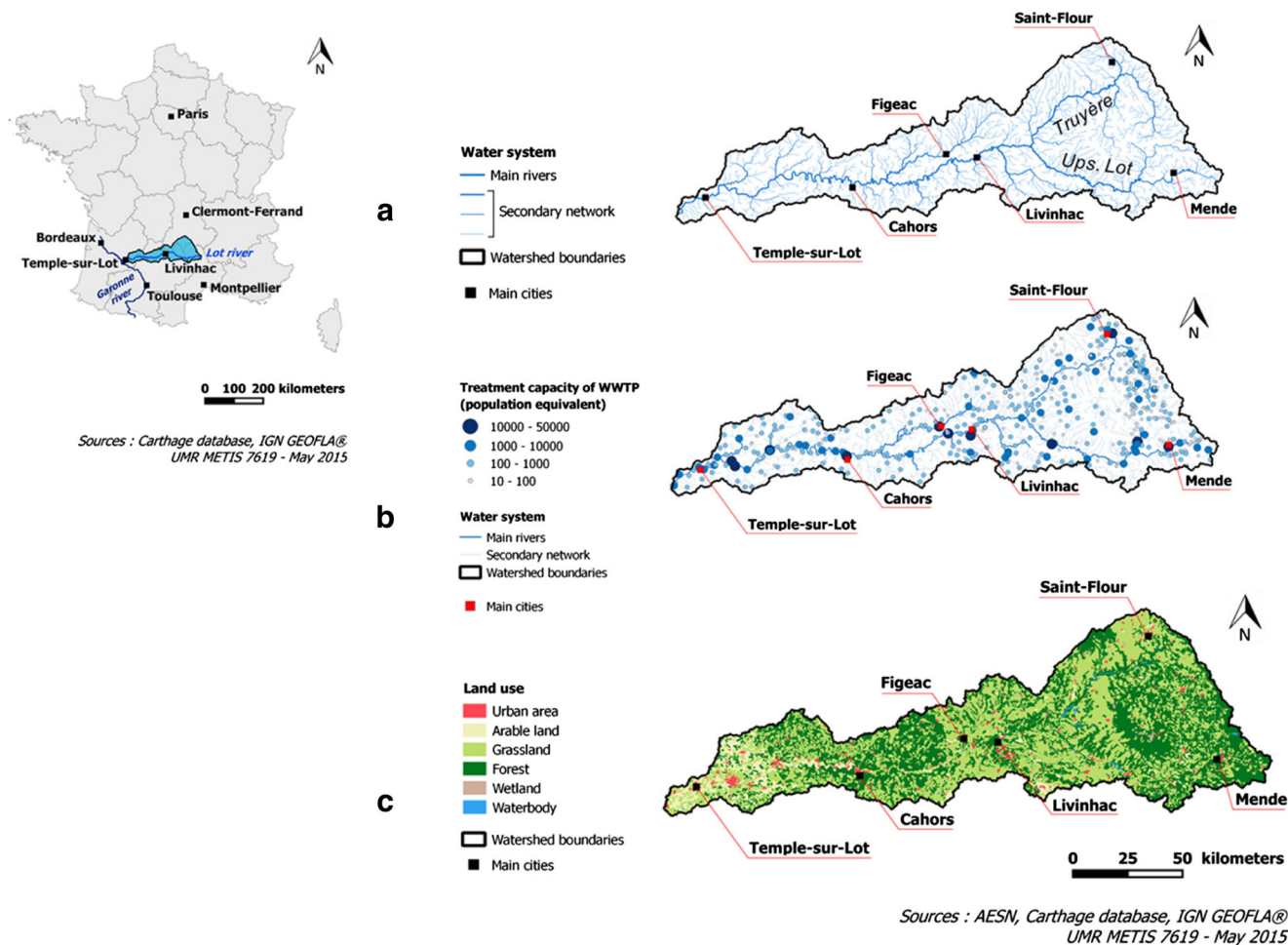
Besides an activated sludge biological treatment, these 33 WWTPs treat 71% of the inh. eq. with nitrification and denitrification and 62% with an additional chemical dephosphatation.

Land use (Fig. 1c) is distributed into forest (45%) and grassland (47%). Arable land (6%) is dominated by intensive cropping system with short 3-year rotation, alternating soft wheat, maize (often irrigated), and fertilized artificial grassland. Vineyards (Cahors wine) are also important agricultural activities together with market gardening (plums, apples, melons, kiwis, etc.) and duck keeping.

### The Riverstrahler approach

The Riverstrahler modeling approach was applied to the Lot river (2002–2014) using existing data (Table 1) and original data and measurements obtained in the scope of the ANR-Twin Rivers project (Coynel et al. 2016).

Riverstrahler is a process-based model of nutrient transfer and biogeochemical functioning of large river systems (Billen et al. 1994; Garnier et al. 1995; Billen and Garnier 2000; Garnier et al. 2002) at a seasonal scale. It is a biogeochemical tool, describing in detail the in-stream processes affecting nutrients and aquatic microbial life and related water quality in a drainage network as constrained by the geomorphology of the basin, its hydrology, climate (light, temperature), and human activities (described in terms of point and diffuse sources). The originality of the modeling approach lies in the coupling of a representation of the whole drainage network, partly based on Strahler's (1957) stream order classification by sub-basins, and a detailed (kilometric) representation of the main river branches. Nine sub-basins have been taken into account, the largest being the Truyère, the upstream Lot, and the Célé (3283, 2244, and 1367 km<sup>2</sup>, respectively). The main branch of the Lot, from the confluence of the Truyère, is 310 km long and has a direct watershed of 3135 km<sup>2</sup>. This geomorphological representation for which the hydrology is generated (see below) is coupled with a biogeochemical process model (RIVE). The RIVE model takes into account the dynamics of three algal groups (diatom, green algae, and cyanobacteria) and two groups of zooplankton (cladocerans and rotifers) to calculate their biomass and simulates the biogeochemical cycles of carbon, oxygen, nitrogen, phosphorus, and silica in the drainage network, also taking heterotrophic and nitrifying bacterial communities explicitly into account (see Garnier et al. 2002). All these processes important in the transformation, elimination, and/or immobilization of nutrients during their in-stream transfer are calculated at the seasonal scale (at a 10-day resolution). A full description of the RIVE model is available at [www.fire.upmc.fr/rive](http://www.fire.upmc.fr/rive)



**Fig. 1** a Situation of the Lot river basin and its drainage network. b Treatment capacity of wastewater treatment plants of the Lot basin, as an indicator of population density. c land use map

## The Riverstrahler model inputs

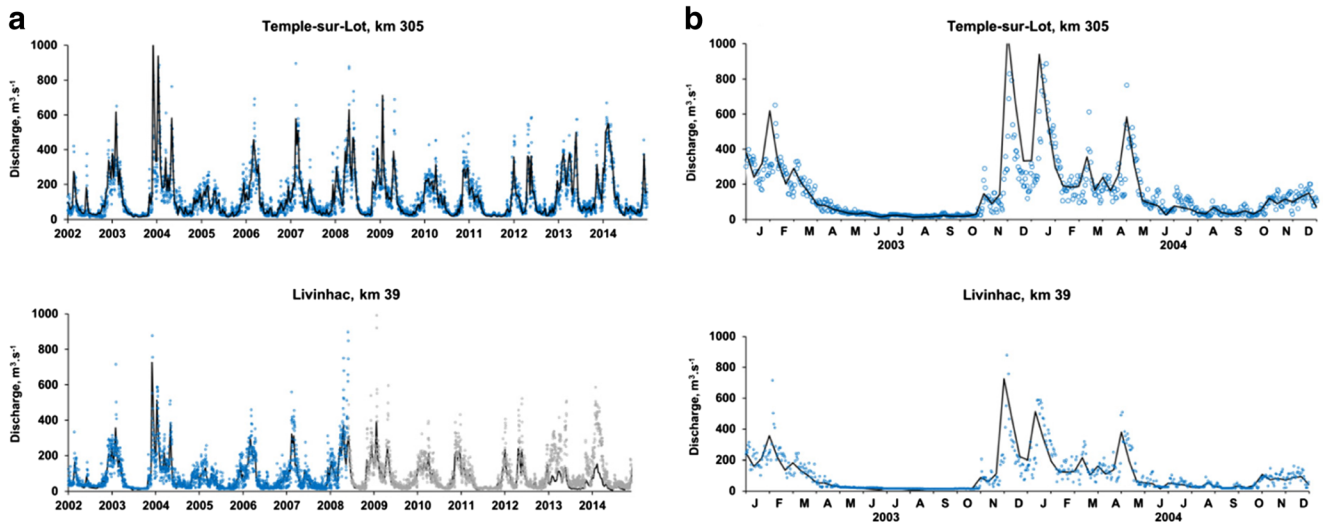
**Morphology and hydrology** The hydrographic network GIS layer is derived from the CarTHAgE® database, combined with DEM data from NASA/SRTM (Jarvis et al. 2008) to delineate elementary watersheds. Hydrological data are those provided by the HYDRO database (Leleu et al. 2014), averaged at a daily time step and then broken down into surface runoff and base flows, using the Eckhardt recursive filter (Eckhardt 2008), in order to make possible distinguishing nutrient inputs from these two components of the discharge. Reconstruction of hydrological regimes used 27 gauging stations for the 2002–2012 period and then 18 stations for 2013–2014. Specific surface and base flows were thus generated for each sub-basin and branch considered for the modeling project (here nine sub-basins and one main branch). From mid-2008 to 2014, the discharge at Livinhac was reconstructed from two other gauging stations (Fig. 2, see details in the legend). The presence of reservoirs in the upstream basin, which does not strongly affect the hydrological behavior of the downstream river (Tourenq et al., 1978), was implicitly

taken into account based on observed discharge measurements.

**Point and diffuse sources** Point sources are calculated in terms of nitrogen, phosphorus, carbon, and suspended solid fluxes on the basis of a spatial census of wastewater treatment plant releases (see Fig. 1b) with associated treatment capacity and treatment type. They also include the inventory of industrial releases in the basin (data sources in Table 1). Diffuse sources are estimated as nutrient concentrations characterizing each of the watershed's land use classes (Corine Land Cover database: Bossard et al. 2000; EEA 2007) and multiplied by surface runoff and base flow. Most of the data are retrieved from European databases (see Table 1) and regionalized for each land use class within each statistical NUTS region (NUTS level 3). Diffuse sources of suspended solids are derived from PESERA estimates of soil erosion (Kirkby et al. 2004) and combined with topsoil data from the European LUCAS survey (Thoth et al. 2013) to estimate land-based emissions of particulate phosphorus and organic carbon. Dissolved silica concentrations are assigned according to litho-morphological

**Table 1** Data sources for the forcing functions of the Senèque-Riverstrahler model: construction of the drainage network; quantification of the domestic point sources; documentation of the diffuse sources

	Data sources	References	URLs
<i>Morphology</i>			
Hydrographic network	Carthage database (Base de Données sur la CARTographie THématique des Agences de l'eau)—Sandre/IGN	Jarvis et al. (2008)	<a href="http://www.sandre.eaufrance.fr/Rechercher-un-jeu-de-donnees?keyword=carthage">http://www.sandre.eaufrance.fr/Rechercher-un-jeu-de-donnees?keyword=carthage</a>
Elementary watershed	DEM data from NASA/SRTM		<a href="http://srtm.csi.cgiar.org">http://srtm.csi.cgiar.org</a>
<i>Hydrology</i>			
Daily runoff	HYDRO database—SANDRE	Leleu et al. (2014)	<a href="http://www.hydro.eaufrance.fr/selection.php">http://www.hydro.eaufrance.fr/selection.php</a>
<i>Point sources</i>			
Waste water treatment plants (2009–2014)	Portail de l'assainissement communal, Ministère de l'environnement, de l'Énergie et de la Mer		<a href="http://assainissement.developpement-durable.gouv.fr/services.php">http://assainissement.developpement-durable.gouv.fr/services.php</a>
Industry (2002–2014)	Données de rejets des industriels, Agence de l'Eau Adour-Garonne		<a href="http://adour-garonne.eaufrance.fr/catalogue/762c267b-8419-4f33-9179-6e4b4b7e61ba">http://adour-garonne.eaufrance.fr/catalogue/762c267b-8419-4f33-9179-6e4b4b7e61ba</a>
<i>Diffuse sources</i>			
Landuse	Corine Land Cover 2000 and 2006, EEA	Bossard et al. 2000; EEA 2007	<a href="http://www.eea.europa.eu/data-and-maps/data/">http://www.eea.europa.eu/data-and-maps/data/</a>
Agricultural statistics	Eurostat statistics by NUTS3 regions		<a href="http://ec.europa.eu/eurostat/web/agriculture/data/database">http://ec.europa.eu/eurostat/web/agriculture/data/database</a>
Soil erosion	European Soil Data Center: PESERA map	Kirkby et al. (2004)	<a href="http://esdac.jrc.ec.europa.eu/content/pan-european-soil-erosion-risk-assessment-pesera">http://esdac.jrc.ec.europa.eu/content/pan-european-soil-erosion-risk-assessment-pesera</a>
Soil content	Land Use/Land Cover Frame Survey LUCAS	Thoth et al. (2013)	<a href="http://esdac.jrc.ec.europa.eu/content/lucas-2009-topsoil-data">http://esdac.jrc.ec.europa.eu/content/lucas-2009-topsoil-data</a>
Litho-morphology	Hydro-Ecoregions	Wasson et al. (2010)	<a href="https://www.data.gouv.fr/fr/datasets/hydroecoregion-de-niveau-1-her-1/">https://www.data.gouv.fr/fr/datasets/hydroecoregion-de-niveau-1-her-1/</a>
<i>Water quality monitoring</i>			
Nutrients, Chla	Agence de l'Eau Adour Garonne, surveys (2002–2014)		<a href="http://www.eau-adour-garonne.fr/fr/informations-et-donnees/donnees-sur-l-eau.html">http://www.eau-adour-garonne.fr/fr/informations-et-donnees/donnees-sur-l-eau.html</a>
Nutrients	ANR-Twin Rivers project (2013–2014).		
Suspended solids	Permanent geochemical network of the EPOC Laboratory (2002–2014)		



**Fig. 2** a Averaged discharge (10 days) and comparison with the daily observed data (in blue) from 2002 to 2014 for the upstream station (Livinhac) and downstream station (Temple-sur-Lot) of the main branch of the Lot. Observations from 2008 to 2014 at Livinhac were reconstructed by subtracting the daily discharges of the major, information (European Ecoregions: Wasson et al. 2010) using a simple dichotomy between crystalline and sedimentary rocks ( $5 \text{ mg Si L}^{-1}$  for sedimentary rocks or recent alluviums and  $3 \text{ mg Si L}^{-1}$  for crystalline or metamorphic rocks, in accordance with the value provided by Meybeck 1986).

The approach used for nitrogen is more sophisticated, because the diffuse sources of this element are dependent on the structure of the agro-food system of the areas composing the watersheds. The GRAFS approach (Generalized Representation of Agro-Food Systems, Billen et al. 2014) was used to establish a comprehensive analysis of the agricultural EUROSTAT databases and to define the nitrogen surplus, which is then used to calculate the nitrogen leaching flux and concentrations (Anglade 2015).

## Validation of the model

Kinetic physiological parameters involved in the model description have been determined through field or laboratory experiments under controlled conditions and are therefore a priori defined, so that no calibration procedure is required for running the model. The comparison between observations and simulations thus directly indicates the goodness of our knowledge of the forcing functions to the model (morphology, hydrology, point and diffuse inputs) as well as of the ecological processes taken into account. Using the same parameters, the Riverstrahler modeling approach has already been successfully applied to several river systems across the world (from the temperate Seine river (Billen et al. 2007) to the monsoon Red river (Le et al. 2014), from small streams (Garnier et al. 2014) to large rivers (Garnier et al. 2002), from pristine (Sferratore et al. 2008) to strongly human-impacted rivers (Billen et al. 2005; Thieu et al. 2009)).

immediately downstream tributary, the Célé (km 116), from the closest Lot downstream station (km 143) (in gray). b Seasonal variations of calculated and observed discharge for 2003 to 2004 for the upstream station and downstream station of the main branch of the Lot

Water quality data were gathered from the Adour-Garonne Water Agency surveys (1970–2014) and from the ANR-Twin Rivers project (2013–2014) and were used for interpreting long-term trends of water quality and for validating the model. Whereas water quality (nitrate, ammonium, phosphates and chlorophyll a) data from the water agency are available at intervals ranging from monthly to every 2 months, additional monthly data from the Twin Rivers project were included in the datasets (the same variables plus dissolved silica). Long-term (2002–2014) monitoring of daily suspended solid (SS) concentrations from the permanent geochemical network of the Laboratory EPOC (Coynel et al. 2007; Gil-Diaz et al. 2018) was also used.

We chose the Temple-sur-Lot and Livinhac stations to validate the hydrology (Livinhac, km 39, downstream of the confluence of the upstream Lot and Truyère rivers and Temple-sur-Lot at km 305, Fig. 2). Regarding the validation of water quality, the Temple-sur-Lot station at the outlet of the Lot drainage network was selected.

Ammonium was measured in filtered water (GF/F 0.7- $\mu\text{m}$  porosity) with the indophenol blue method according to Slavyck and McIsaac (1972). Nitrate was also measured in filtered water, after cadmium reduction into nitrite, and nitrite was measured with the sulfanilamide method according to Jones (1984). Dissolved ortho-phosphates in water were analyzed after GF/F filtration (0.7  $\mu\text{m}$  porosity) using the blue-molybdate colorimetric method (Eberlein and Kattner 1987). Dissolved silica (DSi) was determined by spectrophotometry and analyzed from water samples filtered through Whatman GF/F filters and stored at 4 °C (Rodier 1984). Values of suspended solids (SS) were determined as the weight of material retained on a Whatman GF/F membrane per volume unit after drying the filter for 12 h at 50 °C. Chlorophyll a and

**Table 2** Evaluation of the Seneque-Riverstrahler performances for the Lot river. The goodness of fit of the simulations with respect to the observed concentration values at the downstream station Temple has been evaluated for the major variables of water quality by calculating the root mean square error, normalized to the range of the observed data (NRMSE), according to the formula  $(\text{NRMSE} = 100 \times \text{SQR}(1/n \sum_i (\text{Obs}_i - \text{Sim}_i)^2) / (\text{MAX}(\text{Obs}_i) - \text{MIN}(\text{Obs}_i)))$  where  $n$  is the number of observations  $\text{Obs}_i$ . The NRMSE represents a percentage of variation whereas the bias is the slope of the regression line the slope of the regression line between simulated and observed values

Variables	Nb of observations	% NRMSE	Bias (dimless)
Discharge	4743	3	0.99
Nitrate	90	24	0.88
Ammonium	87	18	0.35
Total P	65	23	0.59
o-phosphate	88	17	0.18
Chlorophyll a	88	37	0.65
Suspended matter	4818	4	1.2

phaeopigment concentrations were determined according to Lorenzen (1967).

RMSE normalized to the range of the observations (NRMSE, i.e., a percentage of variation) and bias (the slope of the regression line between simulated and observed values) was used as indexes of the goodness of fit of the model simulations.

## Results

### Interannual variations of water flow and quality

#### Water flow

As shown in Fig. 2a, the 10-day time resolution of our hydrological calculations did not significantly degrade the variations of the discharge data observed, with the exception of some very high transient peaks which were not closely reproduced at either station (Temple-sur-Lot and Livinhac). The average discharge at the outlet was  $127 \text{ m}^3 \text{ s}^{-1}$  with extreme values of  $10.8 \text{ m}^3 \text{ s}^{-1}$  (August 13, 2014) and  $2506 \text{ m}^3 \text{ s}^{-1}$  (December 5, 2003, a 50-year return flood discharge; Coynel et al. 2007). Focusing on the seasonal scale, summer and winter averaged 68 and  $187 \text{ m}^3 \text{ s}^{-1}$ , respectively, for the whole period (Fig. 2b). For certain years (depending on oceanic and/or Mediterranean floods, or snowmelt), a second peak can be observed in April, shortening the low-discharge period. NRMSE and bias for discharge at the two stations over the period 2002–2014 both showed a good agreement between simulations and observations (Table 2).

**Water quality** As a whole, the simulations of major elements involved in phytoplankton development and eutrophication (nutrients, suspended solids) used for defining the quality of water masses show reasonable agreement with the observations. Although the temporality does not always fully fit with the measured values, the general levels and the amplitude of variation of the values are correctly reproduced (Fig. 3). Regarding modeling performances, for the bias, the model underestimated P-PO<sub>4</sub> the most, but this might be due in part to the rather high detection limit of the analysis ( $0.011 \text{ mg P L}^{-1}$ ). Underestimation is less pronounced for ammonium, followed by TP and chlorophyll (Table 2). A good simulated level of the values is found for nitrate and suspended matter (as for discharge above). Whereas NRMSE is less than 25% for all the variables, except for chlorophyll a, it is particularly low (i.e., high goodness) for discharge and suspended matter when the number of validation data is high (Table 2).

The nitrate concentrations observed were seasonally variable with slightly higher values in winter (mean,  $1.6 \pm 0.4 \text{ mg N L}^{-1}$ ) than in summer (mean,  $0.9 \pm 0.5 \text{ mg N L}^{-1}$ ). Values of ammonium (NH<sub>4</sub>) and phosphates (PO<sub>4</sub>), indicators of point sources less diluted by low flow, were also higher in summer. Total phosphorus (TP) values equaled  $0.07 \pm 0.04 \text{ mg TP L}^{-1}$  both in summer and winter (Table 3).

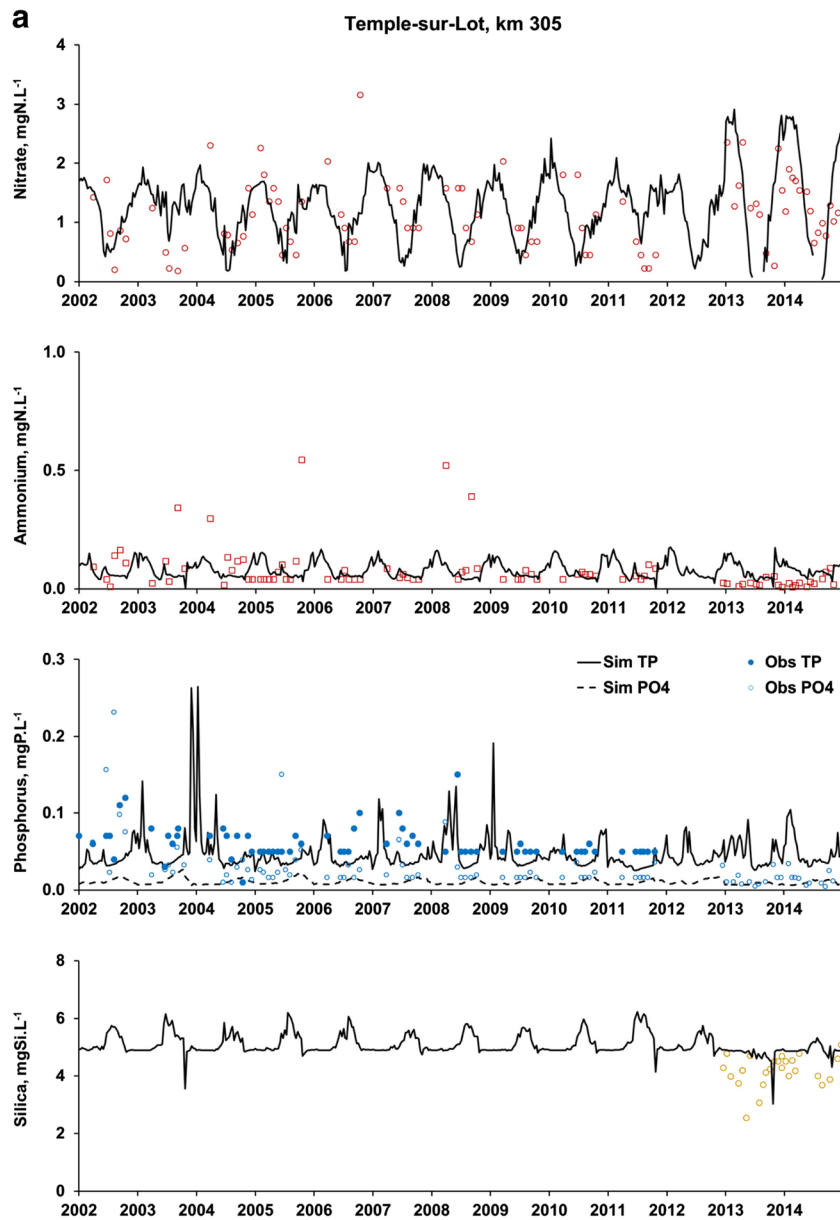
Suspended solids were  $17.2 \pm 43.7 \text{ mg SS L}^{-1}$  in winter, higher than in summer ( $12.6 \pm 16.7 \text{ mg SS L}^{-1}$ ), and showed a high standard deviation, due to transient peaks related to upstream erosion and in-stream or reservoir sediment resuspension (Maneux et al. 2001) (Fig. 3b).

As expected from biological activity, chlorophyll (phytoplankton) concentrations were lower in winter than in summer (average  $2.6 \pm 3.8$  vs.  $8.8 \pm 7.5 \text{ } \mu\text{g Chl}a \text{ L}^{-1}$ ) (Fig. 3a). Oxygen concentrations followed the saturation higher in winter than in summer (Table 3).

#### Nutrient flux and ratios

Once the interannual variability of water quality has been validated, the model can be used to calculate the average annual fluxes from the simulations (Fig. 4) by summing the various dominant forms of nitrogen, phosphorus, and silica represented in the model. TP and total nitrogen (TN) fluxes were calculated from the sum of the fluxes of inorganic dissolved forms (PO<sub>4</sub> and NO<sub>3</sub>, NH<sub>4</sub>) and the nitrogen and phosphorus included in the organic matter compartments. By adding DSi and biogenic silica (BSi), total silica (TSi) fluxes can be obtained. These fluxes varied within the range of 3.5–10.7 kt N year<sup>-1</sup> for NO<sub>3</sub> and 3.7–12.8 kt N year<sup>-1</sup> for TN, nitrate fluxes accounting for a high proportion (85%) in TN. TP ranged between 0.11 and 0.60 kt P year<sup>-1</sup> with o-phosphate flux accounting for a low fraction (11.5%, with values from 0.034 to 0.061 kt P year<sup>-1</sup> for phosphates). TSi fluxes varied from 13.4 to 34.5 kt TSi year<sup>-1</sup>, with mostly DSi





**Fig. 3** Simulation by the Seneque-Riverstrahler model of interannual variations of the water quality variables and comparison with the observed data from 2002 to 2014 at the downstream Temple-sur-Lot

station. **a** Dissolved nutrients (nitrate, ammonium, total phosphorus [TP] and phosphates [ $\text{PO}_4$ ], dissolved silica [silica]). **b** Total suspended solids and biomass phytoplankton expressed in chlorophyll a

(90%). Interannual variations of these fluxes varied along with average discharge, with 2003, 2008, and 2013 being the wet-test years.

In addition to their absolute values, the ratios between N, P, and Si fluxes matter in terms of potential eutrophication. In particular, excess N or P fluxes with respect to Si can lead to unbalanced algal growth, favoring non-diatoms, often undesirable species, like toxic dinoflagellates or cyanobacteria. We calculated the N- and P-ICEP, indicators of potential eutrophication of nutrient fluxes (Billen and Garnier 2007; Garnier et al. 2010) (Fig. 5). ICEP is based on the C/N/P/Si ratios of 106:16:1:42 (Redfield et al. 1963; Conley et al. 1989). ICEP represents the excess (positive value) or deficit (negative

value) of either N or P over silica, a non-anthropogenic nutrient issued from rock weathering and essential for diatom growth. Positive P- and N-ICEP values mean that diatoms are Si-limited with regard to phosphorus and nitrogen, promoting the growth of non-siliceous, potentially toxic algae. Positive N-ICEP, i.e., *with N replenishment*, has been suggested to indicate a risk of toxin production by several algal taxa (Gobler et al. 2007), but no clear results have been obtained yet (Pineda-Mendoza et al. 2016). The results show that in the Lot river, P-ICEP values were all negative (i.e., silica was in excess relative to phosphorus) averaging  $-5.9 \text{ kg C km}^{-2} \text{ day}^{-1}$  (from  $-8.7$  to  $-2.8 \text{ kg C km}^{-2} \text{ day}^{-1}$ ), while N-ICEP was positive (i.e., nitrogen in excess relative to silica)

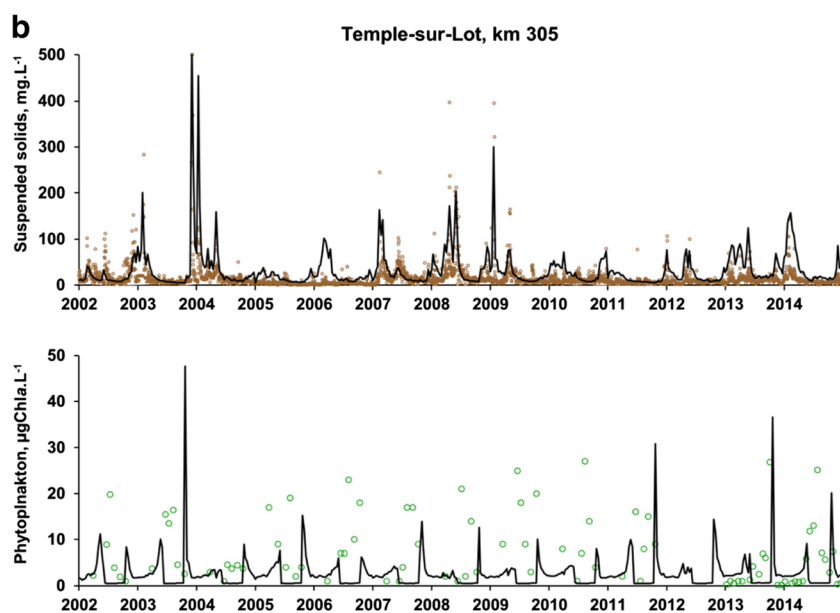


Fig. 3 continued.

averaging  $3.8 \text{ kg C km}^{-2} \text{ day}^{-1}$  (from  $1.5$  to  $9.8 \text{ kg C km}^{-2} \text{ day}^{-1}$ ), with higher values for the last 2 years under study ( $7.1$  and  $9.8 \text{ kg C km}^{-2} \text{ day}^{-1}$  in 2013 and 2014, respectively).

### Long-term trends in nutrient concentrations

The water quality data used to validate the model simulations at the Temple and Livinhac stations, at km 305 and km 39, respectively, along the main branch of the Lot river, can be placed in a more comprehensive set of available data starting in the early 1970s (Fig. 6). The success of the wastewater purification policy implemented since the end of the 1970s was evidenced by the clear decrease in ammonium (from the 1990s on) and phosphate (after 2000) concentrations, in spite of the increase of the overall collected population of the watershed estimated at 232,000 inh. eq. in 1970 (Décamps 1978) and 530,000 in 2014.

In contrast, nitrate concentration regularly increased over the same period by approximately a factor of two. For avoiding eutrophication risks (Grizzetti et al. 2011) and protecting biodiversity of vegetal (James et al. 2005) and animal (Camargo et al. 2005) communities, nitrate values in surface water should remain in a range of  $1.5\text{--}2 \text{ mg N l}^{-1}$ . This threshold is occasionally exceeded in the lower part of the basin in the recent years (Figs. 3 and 6).

Although fewer data are available, the silica concentration did not show any significant trend during the last few years of the reconstruction period (1970–2015), which is expected because it is mainly caused by rock weathering.

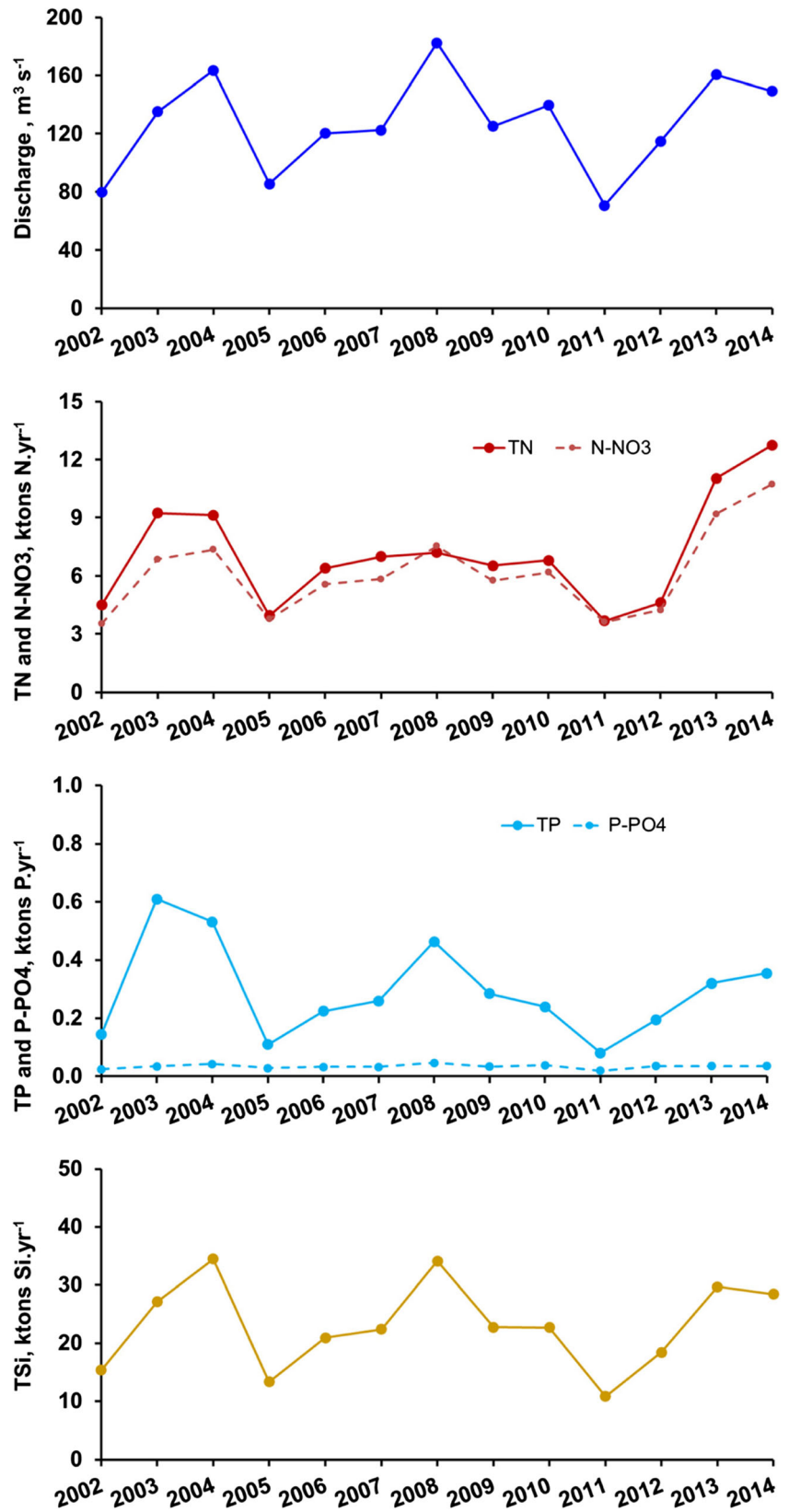
### Wastewater treatment and agricultural scenarios

Regarding nutrients and eutrophication, the Lot river does not show evidence of severe ecological dysfunctioning. However, as suggested by the increased nitrate concentrations, increasing intensive agriculture could become detrimental for the Lot

**Table 3** Values of water quality variables: average and standard deviation (SD) for summer (May–October), winter periods (November–April), and all years from 2002 to 2014 (from 6 to 12 values per year, daily values for suspended solids, SS). *NO3* nitrate, *NH4* ammonium, *TP* total phosphorus, *PO4* phosphates, *OXY* oxygen, *CHLA* chlorophyll a, *SS* suspended solids

Observations		<i>NO3</i> mg N L <sup>-1</sup>	<i>NH4</i> mg N L <sup>-1</sup>	<i>TP</i> mg P L <sup>-1</sup>	<i>PO4</i> mg P L <sup>-1</sup>	<i>OXY</i> mg O <sub>2</sub> L <sup>-1</sup>	<i>CHLA</i> µg Chla L <sup>-1</sup>	<i>SS</i> mg L <sup>-1</sup>
Summer	Average	0.9	0.08	0.07	0.05	8.4	8.6	12.6
	<i>SD</i>	0.5	0.08	0.04	0.10	1.5	7.5	16.7
Winter	Average	1.6	0.06	0.07	0.02	11.2	2.6	17.2
	<i>SD</i>	0.4	0.10	0.04	0.02	1.4	3.8	43.7
Year	Average	1.1	0.08	0.07	0.04	9.2	7.1	14.9
	<i>SD</i>	0.6	0.09	0.04	0.08	2.0	7.2	33.6

**Fig. 4** Yearly averaged fluxes, simulated by the Senegalese Riverstrahler model for water discharge, total nitrogen (TN) and nitrate (N-NO<sub>3</sub>), total phosphorus (TP) and phosphates (P-PO<sub>4</sub>), and total silica (TSi)



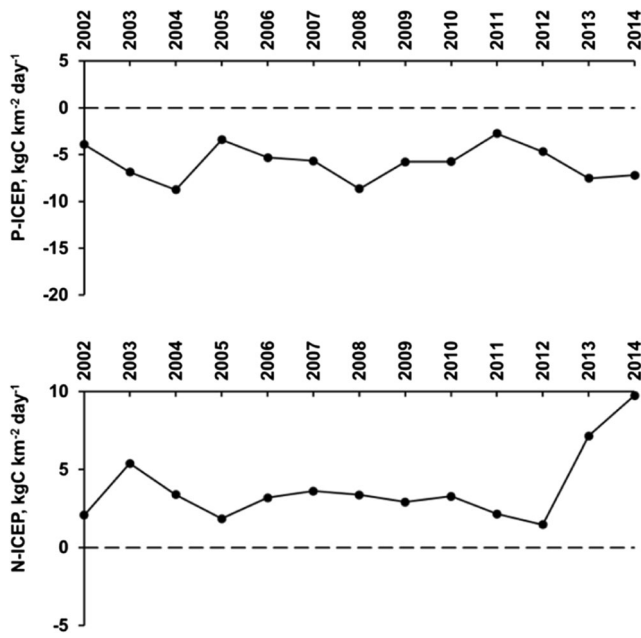


Fig. 5 Yearly average of ICEP indicators (P-ICEP and N-ICEP), calculated from yearly average TP, TN, and TSi fluxes

surface and groundwater quality, as for many other river systems in France and Europe.

Therefore, we explored three scenarios for representing possible futures of human activity in the Lot watershed. In addition to the simple compliance of the EU directive for wastewater treatment plants (i.e., phosphorus and nitrogen treatment, called the Urban Wastewater Directive, UWWD), we tested two contrasted agricultural scenarios. The first, here called good agricultural practices (GAP), assumes the same current conventional rotations, with full application of the current regulations (balanced fertilization following the agronomical recommendation with respect to current yield objectives and catch crop introduction before spring crops; Justes et al. 2012). The second involves a radical change in the present agro-food system, with generalization of organic farming based on long and diversified rotations (no use of mineral fertilizers), reconnection of livestock and crop farming following the specification for organic cattle breeding and the reduction of animal products in the human diet (the “Organic local demitarian scenario”, OrgLocDem) (Billen

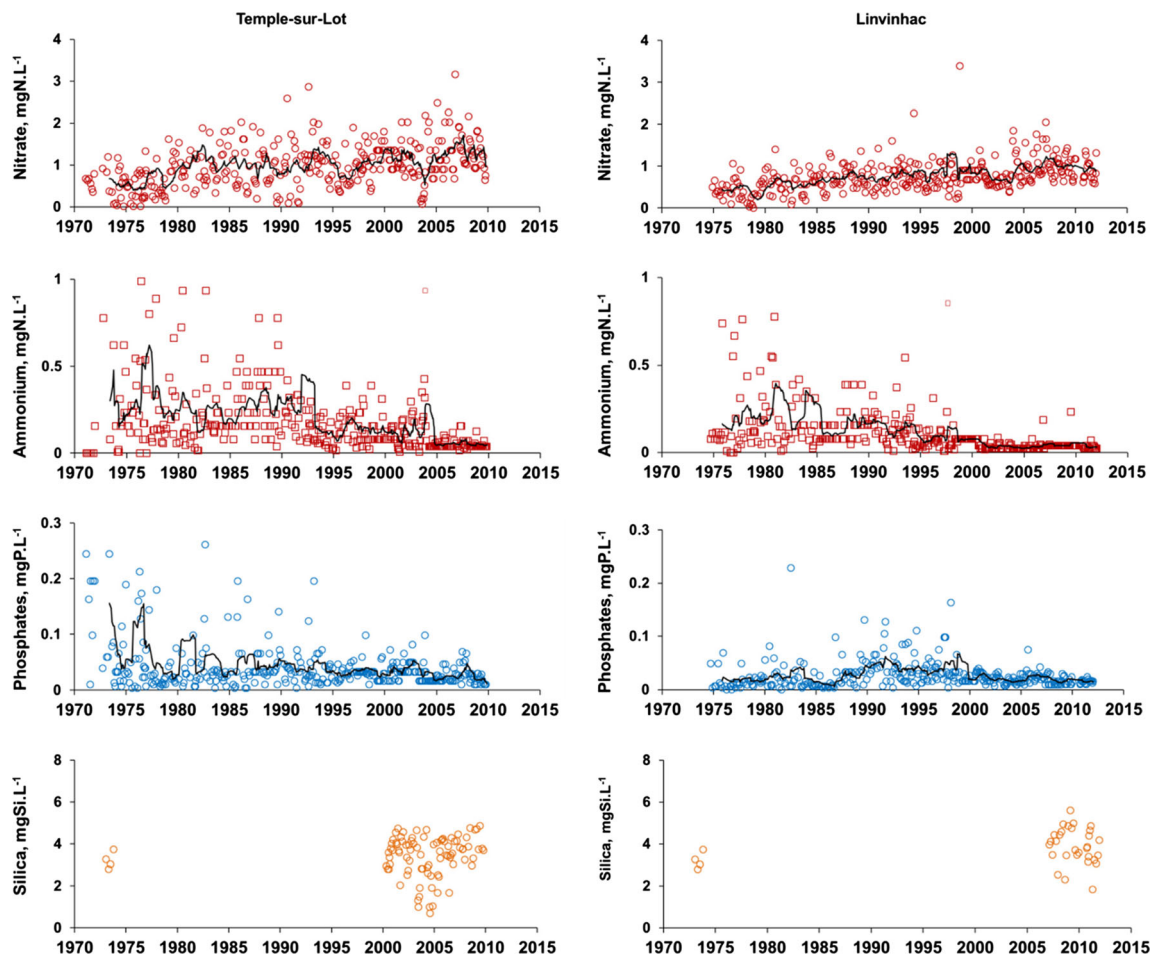


Fig. 6 Long-term variations of observed nitrate, ammonium, phosphates, and dissolved silica concentrations at two stations along the main branch of the Lot river. The solid line is the floating average (12-month increment) over the period covered by the data

et al. 2016; Garnier et al. 2016). Both agricultural scenarios include the fulfillment of the UWWD prescriptions.

These scenarios were tested based on the situation established for the year 2014, a recent year with average annual hydrology ( $149 \text{ m}^3 \text{ s}^{-1}$ ) close to the average calculated for the 13 years ( $126 \text{ m}^3 \text{ s}^{-1}$ ) taken into account in the study and used here as the reference simulation.

As expected, silica fluxes did not change much for all scenarios. The UWWD scenario only slightly decreased phosphorus flux, which results from the fact that most wastewater treatment plants are already treating phosphorus in compliance with the EU directive. Regarding the agricultural scenarios, no further decrease in phosphorus fluxes was observed. Regarding nitrogen, although a 10% decrease of the flux was obtained for the GAP scenario, the OrgLocDem scenario led to a 40% reduction compared to the reference simulation (Fig. 7).

Two additional scenarios were run. The “pristine” scenario assumed no human activity in the watershed, which was considered entirely covered by forest. This scenario thus provided a baseline corresponding to the natural background of nutrient concentrations. In the “WWTP-LT” scenario, we explored the effect of a lower level of WWTP treatment: only standard activated sludge treatment was considered for cities above 2000 inh. eq., while smaller towns were considered to discharge their wastewater without any treatment (Fig. 7). Silica fluxes were slightly higher in the pristine scenario, because of lower in-stream consumption by diatoms. Regarding phosphorus, the pristine scenario showed a 24% lower flux compared to the reference situation. The WWTP-LT scenario, which simulated the level of wastewater treatment of the 1980–1990s, led to a 25% increase in phosphorus fluxes. Regarding nitrogen fluxes, the results for WWTP-LT scenario were close to the reference scenario, showing again that nitrogen originated predominantly from agricultural (Fig. 7). It is remarkable that scenarios such as the GAP and OrgLocDem, which only affected the rather limited agricultural area of the basin (6% arable land, but 47% grassland), had a disproportionate effect on nitrate concentration and fluxes.

## Discussion

### Strength and weakness of the approach

The major strength of our study was to update, since the first works in the 1970s, the analysis of the biogeochemical functioning of the Lot river, in the new context of water quality directives with a comprehensive modeling approach.

The modeling approach applied here has required documenting the constraints that drive the biogeochemical behavior of river system at the scale of the whole basin (morphology and hydrology, diffuse sources from land use and point sources from all wastewater treatment plants). Data for the validation of the model had also to be gathered. The Riverstrahler model revealed to be a good tool for synthesizing all data available regarding nutrients and eutrophication.

A limitation to the study was data availability. For example, we used the same WWTP census data from 2002 to 2009, whereas we obtained data for each year from 2010 to 2014. Changes in the location of the field measurement stations also required making various assumptions to take advantage of a maximum of existing data (see e.g., the reconstruction discharge values for Livinhac at the upstream Lot branch). Water quality data remained however scarce, except for suspended solids.

Also, in this study, we did not take into account the modeling of reservoirs as is generally done for other Riverstrahler model implementations (Garnier et al. 2000; Billen et al. 2007; Le et al. 2014). Taking into account the objective of the study, i.e., nutrient imbalance and eutrophication in the main branch of the Lot river, we therefore consider our approach valid once the discharge values, after separation of surface and base flows, are correctly simulated (see Fig. 2). Moreover, the modeling approach makes it possible to adequately simulate suspended solids, which can be trapped in the reservoirs (Vörösmarty et al. 2003; Dang et al. 2010; Quinton et al. 2010; Le et al. 2014). Although considering reservoirs in the drainage network continuum would help address new scientific questions, this would imply gathering many data

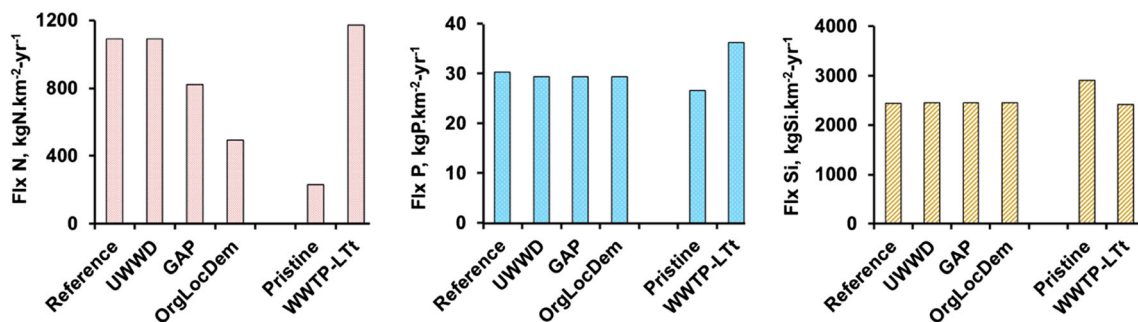


Fig. 7 Specific fluxes, simulated by the Seneque-Riverstrahler model of TN, TP, and TSi for the reference in 2014, compared with five scenarios: UWWD, improved wastewater treatment; GAP, good agricultural

practices; OrgLocDem, generalized organic farming, reconnected to local needs, with a lower animal protein diet); Pristine: no anthropogenic perturbation; WWTP-LT: poor wastewater treatment

(reservoir morphology, discharge upstream and downstream, water quality data in the reservoirs) that are not available, either because they do not exist or because they are confidential.

### Nutrient concentrations and ecological status of the Lot river

Ammonium concentrations at the Lot outlet plateaued at less than  $0.1 \text{ mg N-NH}_4 \text{ L}^{-1}$  and the simulations agreed reasonably with most of the observations, except for a few outsider values at  $0.3\text{--}0.5 \text{ mg N-NH}_4 \text{ L}^{-1}$  that were not well simulated, probably corresponding to occasional dysfunction of wastewater treatment plants (WWTPs). These values are rather low (about  $0.05 \text{ mg N-NH}_4 \text{ L}^{-1}$ , and similar to the Garonne river—Lanoux 2013—or to the Loire river—Gorse et al. 2010; Minaudo et al. 2015) with population density of  $50 \text{ inh. km}^{-2}$ . For comparison with a fourfold higher population density, the ammonium level in the Seine river still averaged  $0.7 \text{ mg N l}^{-1}$  downstream Paris conurbation (Aissa-Grouz et al. 2015).

The model closely reproduced the large amplitude of nitrate variations attributable to denitrification in the riparian zones, as already observed in the Garonne river (Pinay et al., 2000; Sánchez-Pérez et al. 2003; Bernard-Jannin et al. 2017), rather than to benthic denitrification sediments (Thouvenot et al. 2007, 2009). This pattern of nitrate elimination in the riparian zones and flood plains is well documented in literature (Hill 1996; Pinay et al. 1993; Pinay et al. 2000; Billen and Garnier 2000; Vidon et al. 2010).

The simulation of phosphates was well within the average of the scatter, although some high values, especially at the beginning of the chronicle, were not reproduced by the model. Similar to ammonium, these high values might stem from WWTP dysfunction. Also, from 2007 to 2012, it seemed that the method used had a detection limit at  $0.05 \text{ mg P-PO}_4 \text{ L}^{-1}$ , whereas lower values may have occurred. Such an acceptable simulation would show that  $\text{PO}_4$  adsorption-desorption processes, newly reparametrized in the model (Aissa-Grouz et al. 2016), were correctly taken into account. Compared with the very few values observed, the silica simulation represented the accurate level, although the decrease in concentration, corresponding to diatom uptake, is sometimes underestimated by the model.

The available long-term series of data (Fig. 6) showed a significant gradual decrease in ammonium and phosphate concentrations all along for the 1971–2010 period as already observed by Capblancq and Tourenq (1978). Regarding nitrate, a regular increase has been observed since the 1970s, in spite of the rather low contribution of arable land to the total land use of the watershed. However, nitrate concentrations in the Lot river remain relatively low compared to rivers with a high proportion of arable land and intensive agriculture, such

as many other rivers in Europe (Bourraoui and Grizzetti 2011).

The negative values in P-ICEP indicate that diatoms are not Si-limited with regard to phosphorus, usually the limiting factor in continental water. The positive N-ICEP value, together with a N/P ratio averaging 28, well above the value of 7 corresponding to the Redfield et al. (1963) ratio, could favor non-diatom development and possibly harmful algae (e.g., toxic Cyanobacteria or other non-grazed algal colonies, Diaz and Rosenberg 2008; Justic et al. 1995), especially if the phosphorus level increases (from WWTP point sources or diffuse soil erosion). These ICEP results followed downstream those found for the Garonne river of 6 and  $-1 \text{ kg C km}^{-2} \text{ day}^{-1}$  for N- and P-ICEP, respectively, for the 2001–2005 period (Romero et al. 2013).

### Future scenarios for the lot river: agriculture is the major lever of improvement

Clearly, the lack of a noticeable difference in terms of nutrient fluxes between the reference situation and the scenario assuming perfect compliance with the urban effluent directive shows that wastewater treatment policy has already met its goal, and that no further improvement can be expected from point source management, both in terms of nitrogen and phosphorus reduction. This does not mean, however, that the level of wastewater treatment could be lowered. Indeed, any relaxation in the domestic effluent treatment (as shown by the low treatment scenario UWWT-LTt), with a strong development of tourism activity for example, could enhance algal development, especially because tourism activity reaches its maximum in summer when the water level is low. The Lot river, with 75 km of navigable river in the downstream section, is attractive for boating, and the Lot Valley is famous for its medieval cities (Conques, Figeac, Saint-Flour, Saint-Cirq Lapopie, Cahors) and its local gastronomy. Many hotels and campsites are already established along the river and this influx of tourists could increase here. Undersizing of WWTPs combined with a dry summer could expose the Lot river to cyanobacteria development and toxin production, as was observed in the nearby Tarn river (Bertrand et al. 2004) and several other rivers in the south of France as mentioned in the “Introduction” section.

Major improvement in water quality is expected from measures taken in the agricultural sector to reduce N losses. Even though only 6% of the watershed area is covered by arable land mostly situated in the basin of the Lot's major branch (Livihac-Temple-sur-Lot), compliance with good agricultural practices could reduce N fluxes by 20%. This GAP scenario would lead to a 40% reduction of N-ICEP ( $2.3 \text{ kg C km}^{-2} \text{ day}^{-1}$ ), for which nitrogen would still indicate a risk for eutrophication, together with phosphorus. More structural changes in agriculture would reduce nitrogen fluxes by 45%

and N-ICEP even more ( $-0.5 \text{ kg C km}^{-2} \text{ day}^{-1}$ , i.e., nitrogen no more in excess to silica), showing that agriculture development can continue once sustainable practices are adopted.

## Conclusion

Despite that wastewater management has considerably reduced the eutrophication potential regarding phosphorus (in absolute levels as well as in terms of ratio regarding silica, cf. negative P-ICEP), a threat still exists due to nitrogen which has regularly increased in the main stem of the Lot and is now in large excess compared to silica and phosphorus. Instead of forming large algal biomass, and hence oxygen deficit through organic matter degradation, the main concern of eutrophication seems to be a development of rather small biomass of toxic cyanobacteria, leading to domestic animal kills. Because tourism is an important economic activity of this region, including recreative water activities (boating, fishing, bathing), public authorities want preventing any health problem. However, agriculture (vineyards, market gardening, maize cropping for duck keeping) is also a major economic issue. Our scenarios show that a change in agriculture production would allow conciliating both tourism and agriculture.

**Acknowledgements** The TWINRIVERS Programme AAP Blanc Inter II SIMI 5-6 2011 project was funded by the National Agency for Research (ANR-11-IS56-0003) and was coordinated by Alexandra Coynel. Georges Vachaud is greatly acknowledged for his kind and relevant advice during the project. We would like to sincerely thank our scientific colleagues for the pioneering work carried out in the 1970s on rivers providing enthusiasm to the next generations of researchers.

## References

- Aissa Grouz A, Garnier J, Billen G, Mercier B, Martinez A (2015) The response of river nitrification to changes in wastewater treatment (the case of the lower Seine River downstream from Paris). *Ann Limnol - Int J Lim* 51(4):351–364. <https://doi.org/10.1051/limn/2015031>
- Aissa Grouz N, Garnier J, Billen G (2016) Long trend reduction of phosphorus wastewater loading in the seine: determination of phosphorus speciation and sorption for modeling algal growth. *Environ Sci Pollut Res*. <https://doi.org/10.1007/s11356-016-7555-7>
- Anglade A (2015) Agriculture biologique, qualité de l'eau et gouvernance. Ph-D Univ. Paris 6 (UPMC), ED "Géosciences et Ressources Naturelles". 295 pp.
- Arini A, Baudrimont M, Feurtet-Mazel A, Coynel A, Blanc G, Coste M, Delmas F (2011) Comparison of periphytic biofilm and filter-feeding bivalve metal bioaccumulation (Cd and Zn) to monitor hydrosystem restoration after industrial remediation: a year of biomonitoring. *J Environ Monit* 13(12):3386–3398. <https://doi.org/10.1039/c1em10581g>
- Audry S, Schafer J, Blanc G, Jouanneau JM (2004a) 50-year sedimentary record of heavy metal pollution (Cd, Zn, Cu, Pb) in the Lot river reservoirs (France). *Environ Pollut* 132(3):413–426. <https://doi.org/10.1016/j.envpol.2004.05.025>
- Audry S, Grosbois C, Bril H, Schafer J, Kierczak J, Blanc G (2010) Post-depositional redistribution of trace metals in reservoir sediments of a mining/smelting-impacted watershed (the Lot river, SW France). *Appl Geochem* 25:78–794
- Bernard-Jannin L, Sun X, Teissier S, Sauvage S, Sánchez-Pérez JM (2017) Spatio-temporal analysis of factors controlling nitrate dynamics and potential denitrification hot spots and hot moments in groundwater of an alluvial floodplain. *Ecol Eng* 103:372–384 <https://doi.org/10.1016/j.ecoleng.2015.12.031>
- Bertrand F, Dunand A, Fosse J, Fradin N, Liger D, Keck G (2004) Les intoxications par les cyanobactéries. *Le Point Vétérinaire* 250:46–50
- Billen G, Garnier J, Hanset P (1994) Modelling phytoplankton development in whole drainage networks: the RIVERSTRAHLER model applied to the Seine river system. *Hydrobiologia* 289:119–137
- Billen G, Garnier J (2000) Nitrogen transfers through the Seine drainage network: a budget based on the application of the Riverstrahler model. *Hydrobiologia* 410:139–150
- Billen G, Garnier J, Rousseau V (2005) Nutrient fluxes and water quality in the drainage network of the Scheldt basin over the last 50 years. *Hydrobiologia* 540(1-3):47–67. <https://doi.org/10.1007/s10750-004-7103-1>
- Billen G, Garnier J (2007) River basin nutrient delivery to the coastal sea: assessing its potential to sustain new production of non siliceous algae. *Mar Chem* 106:148–160. <https://doi.org/10.1016/j.marchem.2006.12.017>
- Billen G, Garnier J, Némery J, Sebilo M, Sferratore A, Barles S, Benoit P, Benoit M (2007) Nutrient transfers through the Seine river continuum: mechanisms and long term trends. *Sci Total Environ* 375(1-3): 80–97. <https://doi.org/10.1016/j.scitotenv.2006.12.005>
- Billen G, Lasseletta L, Garnier J (2014) A biogeochemical view of the global agro-food system: nitrogen flows associated with protein production, consumption and trade. *Global Food Security* 3(3-4): 209–219. <https://doi.org/10.1016/j.gfs.2014.08.003>
- Billen G, Le Noë J, Lasseletta L, Thieu V, Anglade J, Petit L, Garnier J (2016) Et si la France passait au régime « Bio, Local et Demitarien » ? Un scénario radical d'autonomie protéique et azotée de l'agriculture et de l'élevage, et de sobriété alimentaire. *Le DEMETER 2017, 23ème Edition, Economie et stratégie agricoles*, p 389-406. Club DEMETER, Paris ISSN/1166-2115
- Blanc G, Lapaquellerie Y, Maillet N, Anschutz P (1999) A cadmium budget for the Lot-Garonne fluvial system (France). *Hydrobiologia* 410:331–341.
- Bossard M, Feranec J, Otahel J (2000) Corine land cover technical guide—addendum 2000, technical report no 40. EEA, Copenhagen <http://www.eea.eu.int>
- Bouraoui F, Grizzetti B (2011) Long term change of nutrient concentrations of rivers discharging in European seas. *Sci Total Environ* 409(2011):4899–4916. <https://doi.org/10.1016/j.scitotenv.2011.08.015>
- Camargo JA, Alonso A, Salamanca A (2005) Nitrate toxicity to aquatic animals: a review with new data for freshwater invertebrates. *Chemosphere* 58(9):1255–1267. <https://doi.org/10.1016/j.chemosphere.2004.10.044>
- Capblancq J, Dauta A (1978) Phytoplankton et production primaire de la rivière Lot. *Annls Limnol* 14(1–2):85–112. <https://doi.org/10.1051/limn/1978006>
- Capblancq J, Tourenq J-N (1978) Hydrochimie de la rivière Lot. *Annls Limnol*. 14(1–2):25–37. <https://doi.org/10.1051/limn/1978003>
- Capblancq J, Dauta A, Caussade B, Décamps H (1982) Variations journalières de la production phytoplanktonique en rivière :

- modélisation d'un bief du Lot. *Annls Limnol.* 18(2):101–132. <https://doi.org/10.1051/limn/1982017>
- Conley DJ, Kilham SS, Theriot EC (1989) Differences in silica content between marine and freshwater diatoms. *Limnol Oceanogr* 34(1): 205–213. <https://doi.org/10.4319/lo.1989.34.1.0205>
- Coynel A, Schäfer J, Dabrin A, Girardot N, Blanc G (2007) Groundwater contributions to metal transport in a small river affected by mining and smelting waste. *Water Res* 41(15):3420–3428. <https://doi.org/10.1016/j.watres.2007.04.019>
- Coynel A, Blanc G, Marache A, Schafer J, Dabrin A, Maneux E, Bossy C, Masson M, Lavaux G (2009) Assessment of metal contamination in a small mining-affected watershed - high resolution monitoring coupled with spatial analysis by GIS. *J Environ Monit* 11(5):962–976. <https://doi.org/10.1039/b818671e>
- Coynel A, Garnier J, Némery J, Blanchet Ph, Delmas F (2016) Sustainable and integrated management on watersheds facing industrial pollution and urbanization. A comparative study between Lot river (France) and Danshui River (Taiwan). *Projet ANR-11-IS56-0003 TWINRIVERS Programme AAP Blanc Inter II SIMI 5-6 2011.* 24pp
- Dang TH, Coynel A, Orange D, Blanc G, Etcheber H, Le LA (2010) Long-term monitoring (1960–2008) of the river-sediment transport in the Red River watershed (Vietnam): temporal variability and dam-reservoir impact. *Sci Total Environ* 408(20):4654–4664. <https://doi.org/10.1016/j.scitotenv.2010.07.007>
- Davis AS, Hill JD, Chase CA, Johanns AM, Liebman M (2012) Increasing cropping system diversity balances productivity, profitability and environmental health. *PLoS One* 7, e47149. doi: 10.1371/journal.pone.0047149, DOI: <https://doi.org/10.1371/journal.pone.0047149>
- Décamps H (1978) Qualité des eaux et développement de la Vallée du Lot. *Annls Limnol* 14(1–2):163–179. <https://doi.org/10.1051/limn/1978018>
- Diaz RJ, Rosenberg R (2008) Spreading dead zones and consequences for marine ecosystems. *Science* 321(5891):926–929, ISSN:0036-8075. <https://doi.org/10.1126/science.1156401>
- Eberlein K, Kattner G (1987) Automatic method for the determination of ortho-phosphate and total dissolved phosphorus in the marine environment. *Fresenius' Z Anal Chem* 326(4):354–357. <https://doi.org/10.1007/BF00469784>
- Eckhardt K (2008) A comparison of baseflow indices, which were calculated with seven different baseflow separation methods. *J Hydrol* 352(1-2):168–173. <https://doi.org/10.1016/j.jhydrol.2008.01.005>
- EEA, European Environment Agency (2007) CLC2006 technical guidelines. Technical Report No. 17/2007. European Environment Agency, Luxembourg
- Garnier J, Billen G, Coste M (1995) Seasonal succession of diatoms and Chlorophyceae in the drainage network of the river Seine: observations and modelling. *Limnol Oceanogr* 40:750–765
- Garnier J, Billen G, Sanchez N, Leporcq B (2000) Ecological functioning of a large reservoir in the upstream basin of the river Seine (Marne reservoir, France). *Regulated River* 16:51–71
- Garnier J, Billen G, Hannon E, Fonbonne S, Videnina Y, Soulie M (2002) Modeling transfer and retention of nutrients in the drainage network of the Danube River. *Estuar Coast Shelf Sci* 54(3):285–308. <https://doi.org/10.1006/ecss.2000.0648>
- Garnier J, Beusen A, Thieu V, Billen G, Bouwman L (2010) N:P:Si nutrient export ratios and ecological consequences in coastal seas evaluated by the ICEP approach. Special issue “Past and Future Trends in Nutrient Export from Global Watersheds and Impacts on Water Quality and Eutrophication”, *Global Biogeochem. Cycles*, 24, GB0A05, doi:<https://doi.org/10.1029/2009GB003583>
- Garnier J, Billen G, Vilain G, Benoit M, Passy P, Tallec G, Tournebize J, Anglade J, Billy C, Mercier B, Ansart P, Sebilo M, Kao C (2014) Curative vs. preventive management of nitrogen transfers in rural areas: lessons from the case of the Orgeval watershed (Seine River basin, France). *J Environ Manag* 144:125–134. <https://doi.org/10.1016/j.jenvman.2014.04.030>
- Garnier J, Anglade J, Benoit M, Billen G, Puech T, Ramarson A, Passy P, Silvestre M, Lassaletta L, Trommenschlager J-M, Schott C, Tallec G (2016) Reconnecting crop and cattle farming to reduce nitrogen losses in river water of an intensive agricultural catchment (Seine basin, France). *Environ Sci Policy* 63:76–90. <https://doi.org/10.1016/j.envsci.2016.04.019>
- Gil-Diaz T, Schäfer J, Coynel A, Bossy C, Dutruch L, Blanc G (2018) Antimony in the Lot-Garonne River system: a thirteen-year record of solid/liquid partitioning and fluxes. <http://www.publish.csiro.au/EN/justaccepted/EN17188>
- Gobler CJ, Davis TW, Coyne KJ, Boyer GL (2007) Interactive influences of nutrient loading, zooplankton grazing, and microcystin synthetase gene expression on cyanobacterial bloom dynamics in a eutrophic New York lake. *Harmful Algae* 6(1):119–133. <https://doi.org/10.1016/j.hal.2006.08.003>
- Gorse L, Etcheber H, Coynel A, Anschutz P, Grosbois C, Maillat G, Savoye N, Abril G, Moatar M, Sottolichio A, Maneux E (2010) Analyse multi-proxies des eaux du bassin de la Loire intérieure et estuarienne. 23ème Réunion des Sciences de la Terre, 25–29 oct. 2010, Bordeaux, France
- Grizzetti B, Bouraoui F, Billen G, van Grinsven H, Cardoso AC, Thieu V, Garnier J, Curtis C, Howarth R, Jones P (2011) Chapter 17: reactive nitrogen as a threat to European water quality, 379–404. Part IV—managing nitrogen in relation to key societal treats. In: *Assessment EN* (ed) Sutton et al. Cambridge University Press, London, 612pp
- Hill AR (1996) Nitrate removal in stream riparian zones. *J Environ Qual* 25:743–755
- James C, Fisher J, Russel V, Collings S, Moss B (2005) Nitrate availability and hydrophyte species richness in shallow lakes. *Freshw Biol* 50(6): 1049–1063. <https://doi.org/10.1111/j.1365-2427.2005.01375.x>
- Jarvis A, Reuter HI, Nelson A, Guevara E (2008) Hole-filled SRTM for the globe Version 4, available from the CGIAR-CSI SRTM 90m Database (<http://srtm.csi.cgiar.org>)
- Jones MN (1984) Nitrate reduction by shaking with cadmium, alternative to cadmium columns. *Water Res* 18:643–646
- Justes E, Beaudoin N, Bertuzzi P, Charles R, Constantin J, Durr C, Hermon C, Joannon A, Le Bas C, Mary B, Mignolet C, Montfort F, Ruiz L, Sarthou J-P, Souchere V, Tournebize J, Savini I, Rechauchère O (2012) Réduire les fuites de nitrate au moyen de cultures intermédiaires: conséquences sur les bilans d'eau et d'azote, autres services écosystémiques. *Expertise collective INRA, France*, p 60
- Justić D, Rabalais NN, Turner RE (1995) Stoichiometric nutrient balance and origin of coastal eutrophication. *Mar Pollut Bull* 30(1):41–46. [https://doi.org/10.1016/0025-326X\(94\)00105-I](https://doi.org/10.1016/0025-326X(94)00105-I)
- Kirkby MJ, Jones RJA, Irvine, B, Gobin A, Govers G, Cerdan O, Van Rompaey AJJ, Le Bissonnais Y, Daroussin J, King D, Montanarella L, Grimm M, Vieillefont V, Puigdefabregas J, Boer M, Kosmas C, Yassoglou N, Tsara M, Mantel S, Van Lynden GJ, Huting J (2004) Pan-European soil erosion risk assessment: the PESERA map Version 1 October 2003. Explanation of Special Publication Ispra 2004 No.73 (S.P.I.04.73), European Soil Bureau Research Report No.16, EUR 21176, Office for Official Publications of the European Communities, Luxembourg 18 pp.
- Lapaquellerie Y, Jouanneau JM, Maillat N, Latouche C (1995) Cadmium pollution in sediments of the lot river (France). Estimate of the mass of cadmium. *Environ Technol* 16:1145–1154
- Lanoux A (2013) Caractérisation et rôle respectif des apports organiques amont et locaux sur l'oxygénation des eaux de la Garonne estuarienne. PhD thesis of University Bordeaux 1 -. available on <http://www.theses.fr/2013BOR14830>
- Le TPQ, Billen G, Garnier J (2014) Long-term evolution of the biogeochemical functioning of the Red River (Vietnam): past and present situations. *REC* 15(2):329–339. <https://doi.org/10.1007/s10113-014-0646-4>



- Leleu I, Tonnelier I, Puechberty R, Gouin P, Viquendi I, Cobos L, Foray A, Baillon M, Ndima P-O (2014) La refonte du système d'information national pour la gestion et la mise à disposition des données hydrométriques. *La Houille Blanche* (1):25–32. <https://doi.org/10.1051/lhb/2014004>
- Lorenzen CJ (1967) Determination of chlorophyll and phaeopigments: spectrophotometric equations. *Limnol Oceanogr* 12(2):343–346. <https://doi.org/10.4319/lo.1967.12.2.0343>
- Maneux E, Probst JL, Veyssy E, Etcheber H (2001) Assessment of dam trapping efficiency from water residence time: application to fluvial sediment transport in the Adour, Dordogne and Garonne river basins (France). *Water Resour Res* 37:801–811
- Meybeck M (1986) Composition chimique des ruisseaux non pollués de France. *Sci Géol Bull* 39:3–77
- Minaudo C, Meybeck M, Moatar F, Gassana N, Curie F (2015) Eutrophication mitigation in rivers: 30 years of trends in spatial and seasonal patterns of biogeochemistry of the Loire River (1980–2012). *Biogeosciences* 12(8):2549–2563. <https://doi.org/10.5194/bg-12-2549-2015>
- Morin S, Duong TT, Dabrin A, Coynel A, Herlory O, Baudrimont M, Delmas F, Durrieu G, Schafer J, Winterton P, Blanc G, Coste M (2008) Long term survey of heavy metal pollution, biofilm contamination and diatom community structure in the Riou-Mort watershed, south West France. *Environ Pollut* 151(3):532–542. <https://doi.org/10.1016/j.envpol.2007.04.023>
- Passy P, Gypens N, Billen G, Garnier J, Lancelot C, Thieu V, Rousseau V, Callens J (2013) A model reconstruction of riverine nutrient fluxes and eutrophication in the Belgian coastal zone since 1984. *J Mar System* 128:106–122. <https://doi.org/10.1016/j.jmarsys.2013.05.005>
- Pinay G, Roques L, Fabre A (1993) Spatial and temporal patterns of denitrification in a riparian Forest. *J Appl Ecol* 30(4):581–591. <https://doi.org/10.2307/2404238>
- Pinay G, Black VJ, Planty-Tabacchi AM, Gumiero B, Decamps H (2000) Geomorphic control of denitrification in large river floodplain soils. *Biogeochemistry* 50(2):163–182. <https://doi.org/10.1023/A:1006317004639>
- Pineda-Mendoza RM, Zuniga G, Martinez-Jeronimo F (2016) Microcystin production in *Microcystis aeruginosa*: effect of type of strain, environmental factors, nutrient concentrations, and N:P ratio on *mcyA* gene expression. *Aquat Ecol* 50(1):103–119. <https://doi.org/10.1007/s10452-015-9559-7>
- Quinton JN, Govers G, Van Oost K, Bardgett RD (2010) The impact of agricultural soil erosion on biogeochemical cycling. *Nat Geosci* 3(5):311–314. <https://doi.org/10.1038/ngeo838>
- Redfield AC, Ketchum BH, Richards FA (1963) The influence of organisms on the composition of sea-water. In: Hill MN (ed) *The sea*. John Wiley, New York, pp 12–37
- Rodier J (1984) *L'analyse de l'eau*. 7e édition. DUNOD
- Romero E, Garnier J, Lassaletta L, Billen G, Le Gendre R, Riou P, Cugier P (2013) Large-scale patterns of river inputs in SW Europe: seasonal and interannual variations and potential eutrophication effects at the coastal zone. *Biogeochemistry* 113(1-3):481–505. <https://doi.org/10.1007/s10533-012-9778-0>
- Romero E, Le Gendre R, Garnier J, Billen G, Fisson C, Silvestre M, Ph R (2016) Long-term water quality in the lower Seine: lessons learned over 4 decades of monitoring. *Environ Sci Policy* 58:141–154. <https://doi.org/10.1016/j.envsci.2016.01.016>
- Ruelland D, Billen G, Brunstein D, Garnier J (2007) SENEQUE 3: a GIS interface to the RIVERSTRAHLER model of the biogeochemical functioning of river systems. *Sci Total Environ* 375(1-3):257–273. <https://doi.org/10.1016/j.scitotenv.2006.12.014>
- Sánchez-Pérez JM, Vervier P, Garabétian F, Sauvage S, Loubet M, Rols JL, Bariac T, Weng P (2003) Nitrogen dynamics in the shallow groundwater of a riparian wetland zone of the Garonne SW France: nitrate inputs, bacterial densities, organic matter supply and denitrification measurements. *Hydro Earth Syst Sci* 7(1):97–107. <https://doi.org/10.5194/hess-7-97-2003>
- Sferratore A, Billen G, Garnier J, Humborg C, Rahm L (2008) Modelling nutrient fluxes from sub-arctic basins: comparison of pristine vs. dammed rivers. *J Mar Syst* 73(3-4):236–249. <https://doi.org/10.1016/j.jmarsys.2007.10.012>
- Shinn C, Dauba F, Grenouillet G, Guenard G, Lek S (2009) Temporal variation of heavy metal contamination in fish of the river lot in southern France. *Ecotoxicol Environ Saf* 72(7):1957–1965. <https://doi.org/10.1016/j.ecoenv.2009.06.007>
- Slavycck G, McIsaac JJ (1972) Comparison of two automated ammonium methods in a region of coastal upwelling. *Deep-Sea Res* 19:1–4
- Strahler A (1957) Quantitative analysis of watershed geomorphology. *Trans Am Geophys Union* 38(6):913–920. <https://doi.org/10.1029/TR038i006p00913>
- Thieu V, Billen G, Garnier J (2009) Nutrient transfer in three contrasting NW European watersheds: the Seine, Somme, and Scheldt rivers. A comparative application of the Seneque/Riverstrahler model. *Water Res* 43(6):1740–1754. <https://doi.org/10.1016/j.watres.2009.01.014>
- Thébaud J-M, Quotbi A (1999) A model of phytoplankton development in the Lot river (France). *Simulation and scenarios Wat Res* 33: 1065–1079
- Thouvenot M, Billen G, Garnier J (2007) Modelling nutrient exchange at the sediment – water interface of river systems. *J Hydrol* 341(1-2): 55–78. <https://doi.org/10.1016/j.jhydrol.2007.05.001>
- Thouvenot-Korppoo M, Billen G, Garnier J (2009) Modelling benthic denitrification processes over a whole drainage network. *J Hydrol* 379(3-4):239–250. <https://doi.org/10.1016/j.jhydrol.2009.10.005>
- Toth G, Jones A, Montanarella L. (eds.) 2013. LUCAS topsoil survey. Methodology, data and results. JRC Technical Reports. Luxembourg. Publications Office of the European Union, EUR 26102, Scientific and Technical Research series. ISSN 1831–9424 (online); ISBN 978-92-79-32542-7; doi: <https://doi.org/10.2788/97922>
- Tourenq J-N, Capblancq J, Casanova H (1978) Bassin versant et hydrologie de la rivière Lot. *Annls Limnol* 14(1-2):9–23. <https://doi.org/10.1051/limn/1978005>
- Ulén B, Bechmann M, Fölster J, Jarvie HP, Tunney H (2007) Agriculture as a phosphorus source for eutrophication in the north-west European countries, Norway, Sweden, United Kingdom and Ireland: a review. *British Society of Soil Science, Soil Use Manag* 23(Suppl. 1):5–15. <https://doi.org/10.1111/j.1475-2743.2007.00115.x>
- Vidon P, Craig A, Douglas B, Duval TP, Gurwick N, Inamdar S, Lowrance R, Okay J, Scott D, Sebestyen S (2010) Hot spots and hot moments in riparian zones: potential for improved water quality management. *J Am Water Resour Assoc (JAWRA)* 46(2):278–298. <https://doi.org/10.1111/j.1752-1688.2010.00420.X>
- Volk M, Liersch S, Schmidt G (2009) Towards the implementation of the European water framework directive? Lessons learned from water quality simulations in an agricultural watershed. *Land Use Policy* 26:580e588
- Vörösmarty CJ, Meybeck M, Fekete B, Sharma K, Green P, Syvitski JPM (2003) Anthropogenic sediment retention: major global impact from registered river impoundments. *Glob Planet Chang* 39(1-2):169–190. [https://doi.org/10.1016/S0921-8181\(03\)00023-7](https://doi.org/10.1016/S0921-8181(03)00023-7)
- Wasson JG, Villeneuve B, Iital A, Murray-Bligh J, Dobiasova M, Bacikova S et al (2010) Large-scale relationships between basin and riparian land cover and the ecological status of European rivers. *Freshw Biol* 55:1465–1482
- WFD (Water Framework Directive) (2000). OJ L 327/1, 22.12, pp. 1–72
- UWWTD (Urban wastewater treatment Directive) (1991) 91/271/CEE du Conseil, du 21 mai 1991, relative au traitement des eaux urbaines résiduaires. JO L 135 du 30.5.1991, pp. 40–52